

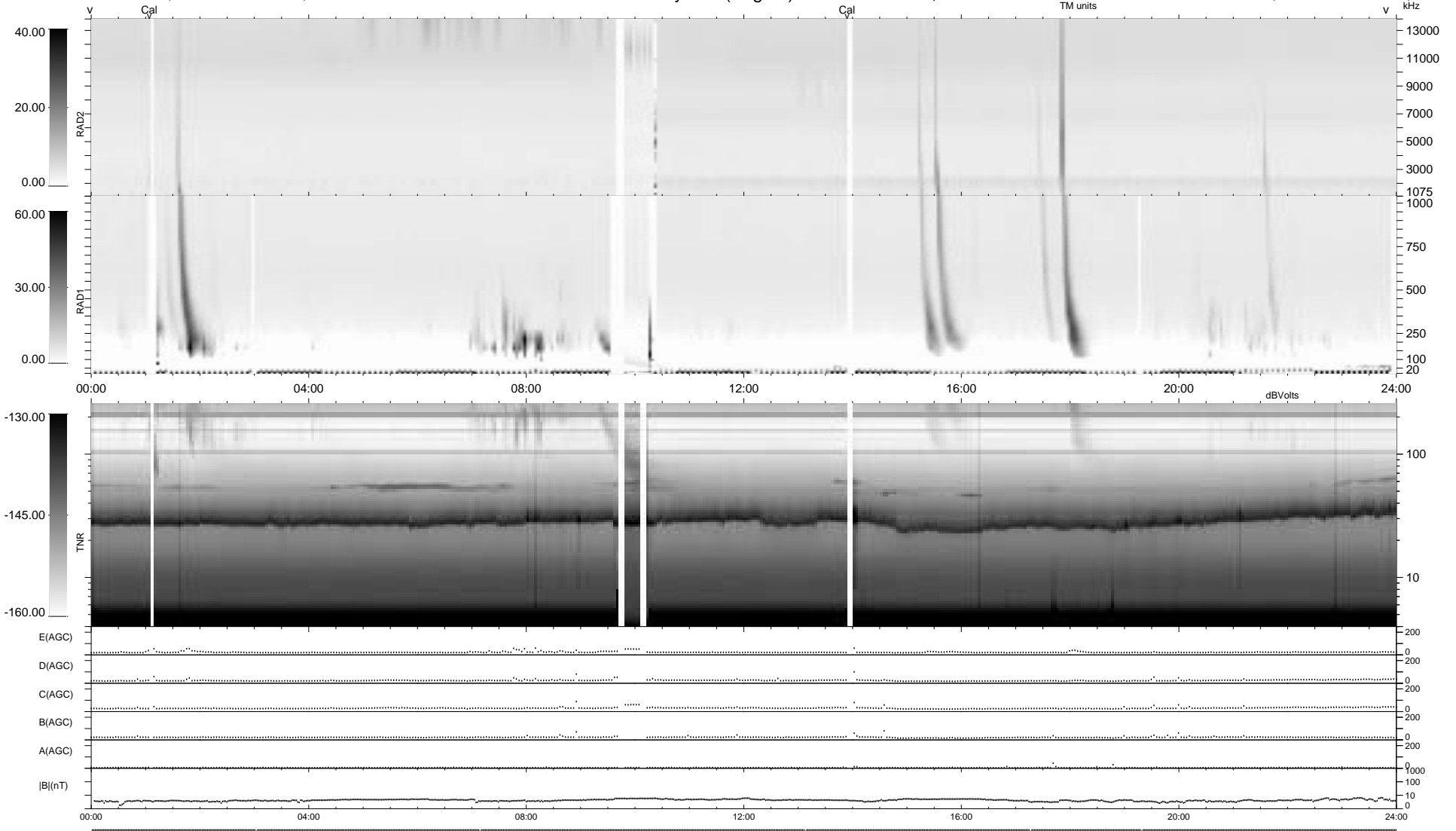
5 bad + 934 good MF/939MF projected (99%) - 0 missing MFs
Avg interval = 180 secs
Re = 167.17 (148.57, -75.85, -11.04 GSE)

1.7d VMS-SunOS

LZ version = v01

WIND/WAVES Summary Plot (Page 1) for 15-JAN-1995, DOY = 15

DAILY Thu Sep 25, 2008
Re = 169.91 (151.77, -75.58, -11.18 GSE)



RAD2
Antenna Ey LIS(3.2)
Mode LIS(3.2) SEP
SUM/SEP SEP
Toggle
RAD1
Antenna Ex LIS(0.0)
Mode LIS(0.0) SEP
SUM/SEP SEP
Toggle
TNR
Antenna EyEx
Mode B-32
Sweep ABCDE