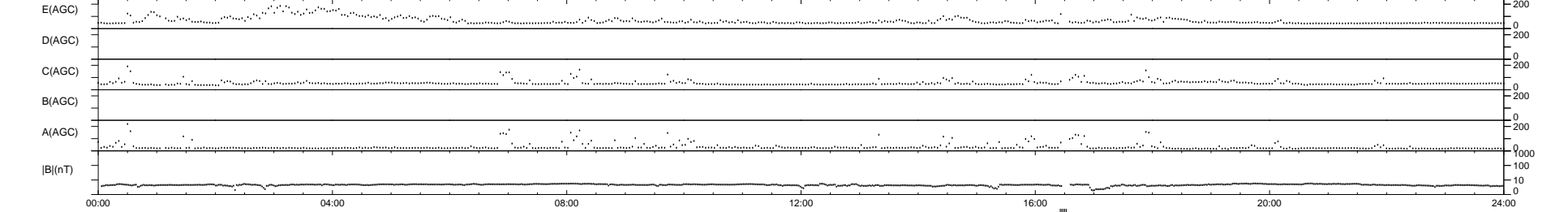
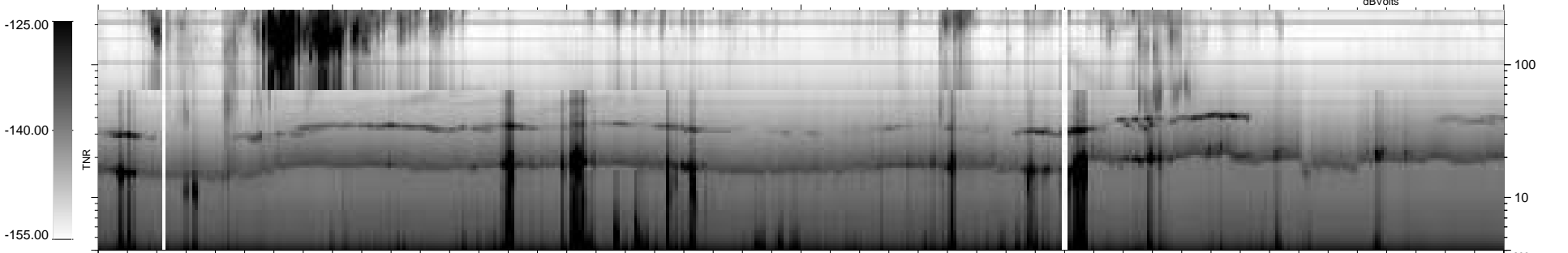
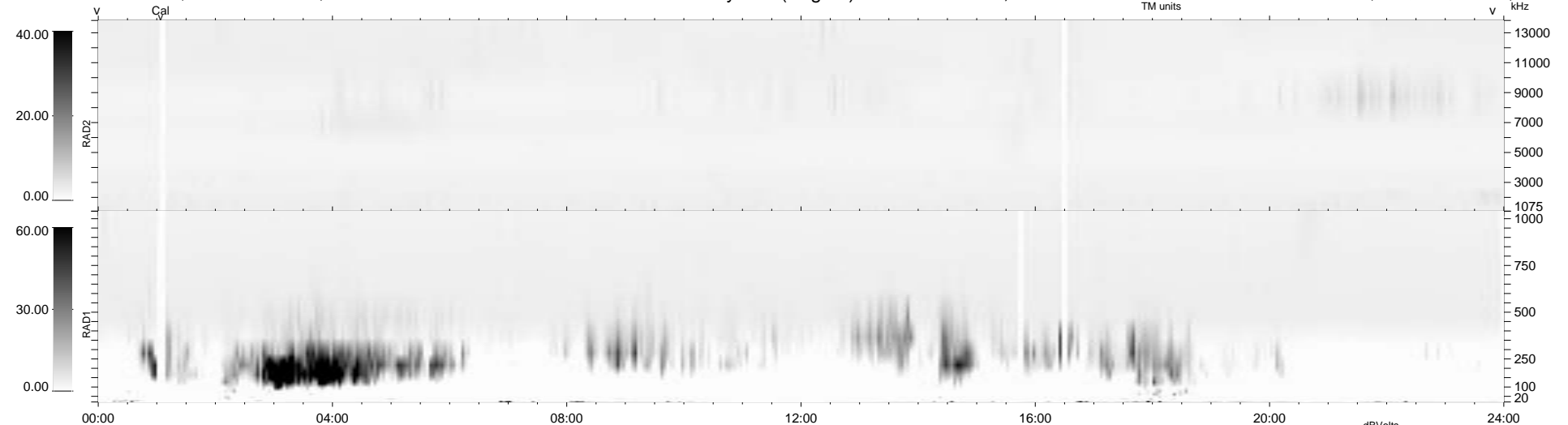


10 bad + 924 good MF/939MF projected (98%) - 5 missing MFs
 Avg interval = 180 secs
 Re = - 142.01 (119.55, -76.10, -9.14 GSE)

1.7d VMS-SunOS LZ version = v01
 DAILY Thu Sep 25, 2008
 Re = 146.33 (124.53, -76.25, -9.51 GSE)

WIND/WAVES Summary Plot (Page 1) for 08-JAN-1995, DOY = 8



```

RAD2
Antenna Ey .....
Mode LIS(3.2) .....
SUM/SEP SUM .....
Toggle OFF .....

RAD1
Antenna Ex .....
Mode LIS(0.0) .....
SUM/SEP SUM .....
Toggle OFF .....

TNR
Antenna ExEz .....
Mode A-32 .....
Sweep ACE .....
  
```