

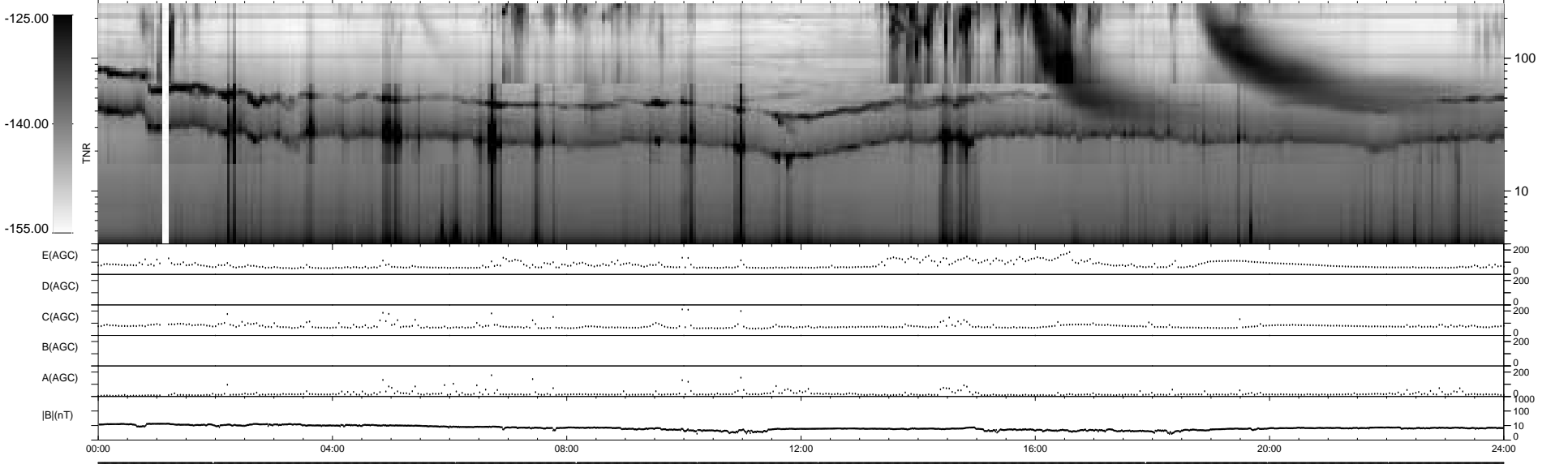
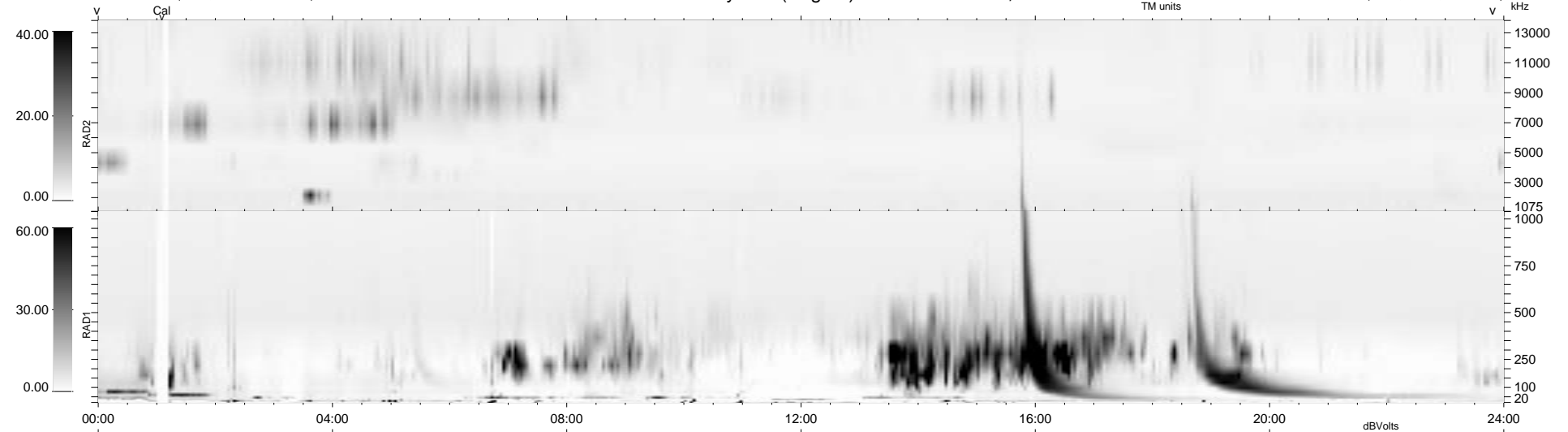
11 bad + 1868 good MF/1879MF projected (99%) - 0 missing MFs
 Avg interval = 180 secs
 Re = - 73.49 (39.15, -62.13, -2.79 GSE)

1.7d VMS-SunOS

LZ version = v01

WIND/WAVES Summary Plot (Page 1) for 29-DEC-1994, DOY = 363

DAILY Fri Sep 26, 2008
 Re = 83.33 (50.79, -65.96, -3.70 GSE)



RAD2
 Antenna Ey
 Mode LIS(3.2)
 SUM/SEP SUM
 Toggle OFF

RAD1
 Antenna Ex
 Mode LIS(0.0)
 SUM/SEP SUM
 Toggle OFF

TNR
 Antenna ExEz
 Mode A-32
 Sweep ACE