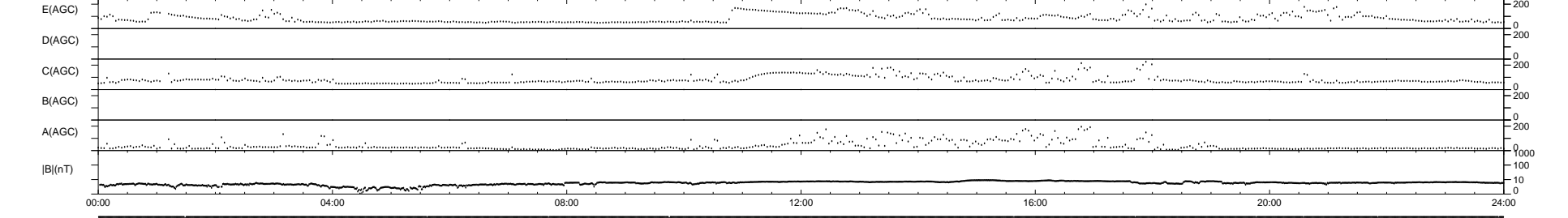
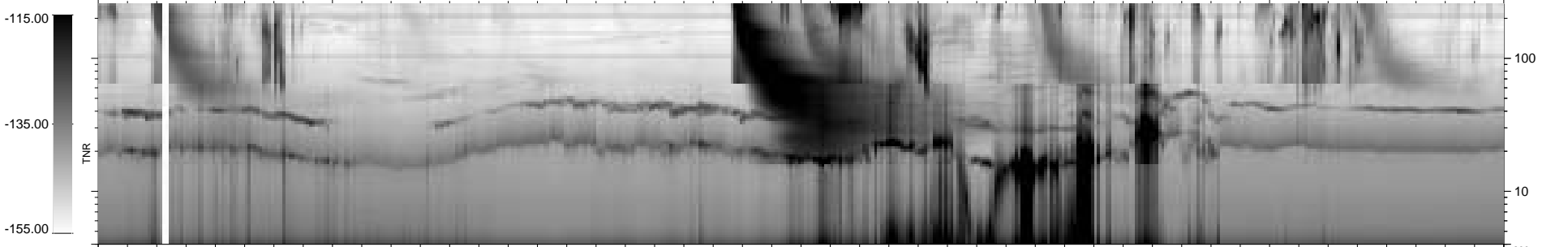
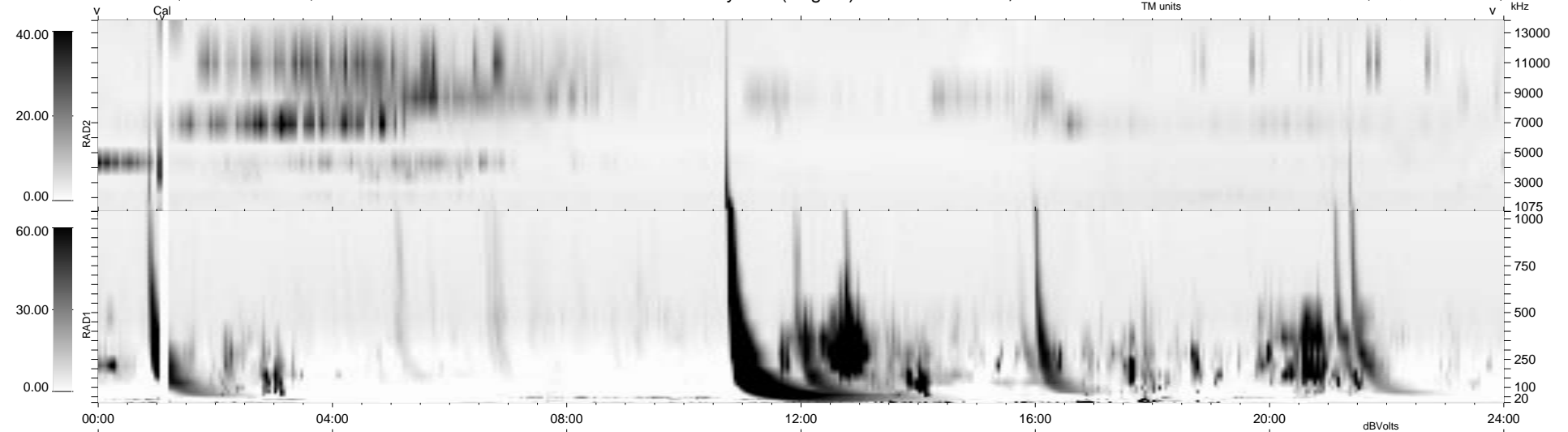


12 bad + 1866 good MF/1878MF projected (99%) - 0 missing MFs  
 Avg interval = 180 secs  
 Re = - 49.98 (16.95, -47.02, -0.65 GSE)

1.7d VMS-SunOS LZ version = v01  
 DAILY Fri Sep 26, 2008  
 Re = 62.09 (26.04, -56.34, -1.70 GSE)

WIND/WAVES Summary Plot (Page 1) for 27-DEC-1994, DOY = 361



RAD2  
 Antenna Ey  
 Mode LIS(3.2)  
 SUM/SEP SUM  
 Toggle OFF

RAD1  
 Antenna Ex  
 Mode LIS(0.0)  
 SUM/SEP SUM  
 Toggle OFF

TNR  
 Antenna ExEz  
 Mode A-32  
 Sweep ACE