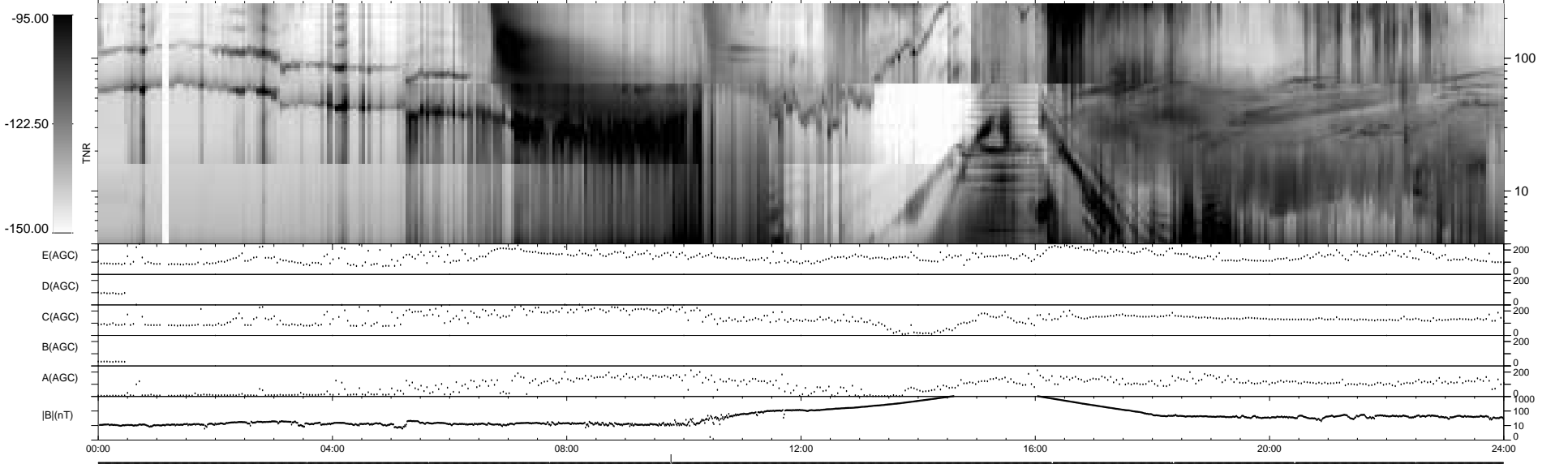
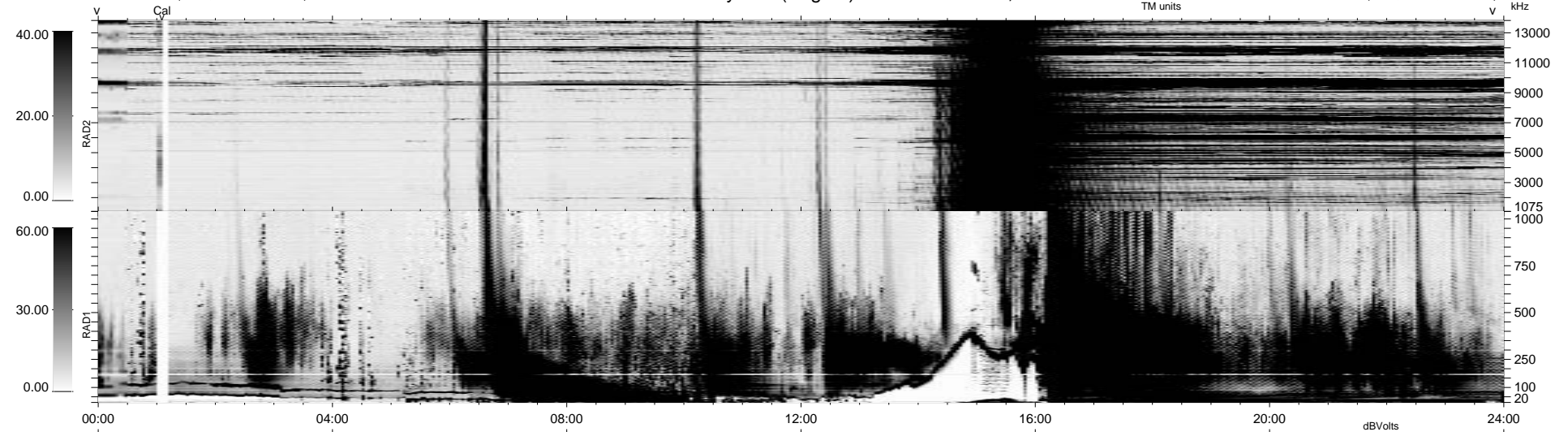


13 bad + 1864 good MF/1878MF projected (99%) - 1 missing MF
 Avg interval = 180 secs
 Re = 22.85 (21.24, -8.33, -1.32 GSE)

1.7d VMS-SunOS LZ version = v01
 DAILY Fri Sep 26, 2008
 Re = 15.50 (-1.89, -15.38, 0.36 GSE)

WIND/WAVES Summary Plot (Page 1) for 24-DEC-1994, DOY = 358



RAD2
 Antenna Ey
 Mode LIN(4) LIN(1)
 SUM/SEP SEP
 Toggle OFF
 RAD1
 Antenna Ex
 Mode LIN(4) LIN(1)
 SUM/SEP SEP
 Toggle OFF
 TNR
 Antenna ExEz
 Mode A-32
 Sweep ABCDE ACE