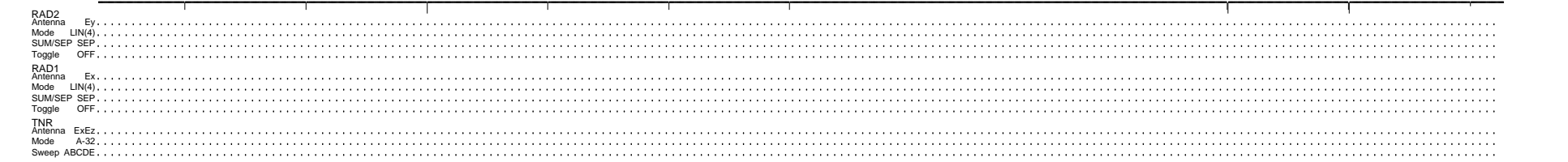
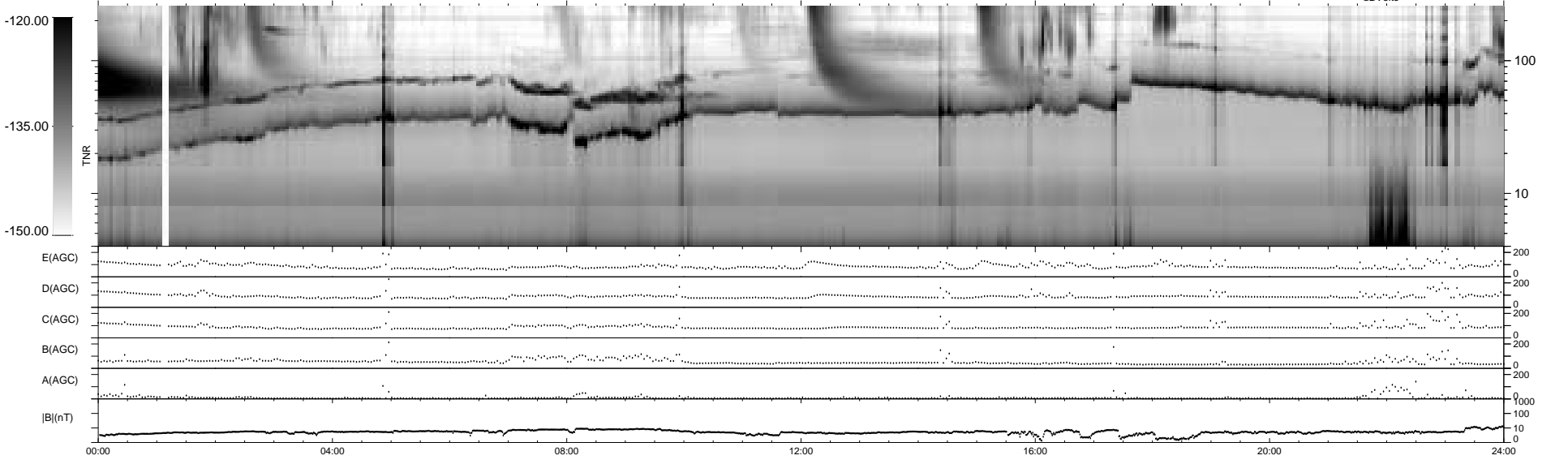
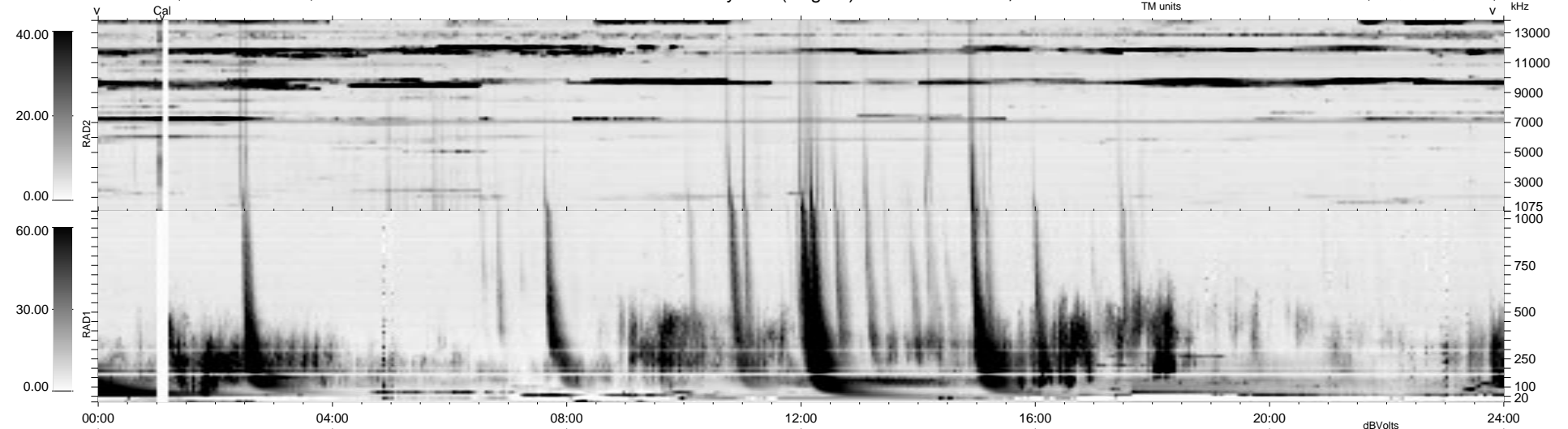


11 bad + 1867 good MF/1878MF projected (99%) - 0 missing MFs  
 Avg interval = 180 secs  
 Re = 40.87 (33.75, -22.98, -1.90 GSE)

1.7d VMS-SunOS LZ version = v01

WIND/WAVES Summary Plot (Page 1) for 23-DEC-1994, DOY = 357

DAILY Fri Sep 26, 2008  
 Re = 23.01 (21.36, -8.45, -1.32 GSE)



RAD2  
 Antenna Ey .....  
 Mode LIN(4) .....  
 SUM/SEP SEP .....  
 Toggle OFF .....  
 RAD1  
 Antenna Ex .....  
 Mode LIN(4) .....  
 SUM/SEP SEP .....  
 Toggle OFF .....  
 TNR  
 Antenna ExEz .....  
 Mode A-32 .....  
 Sweep ABCDE .....