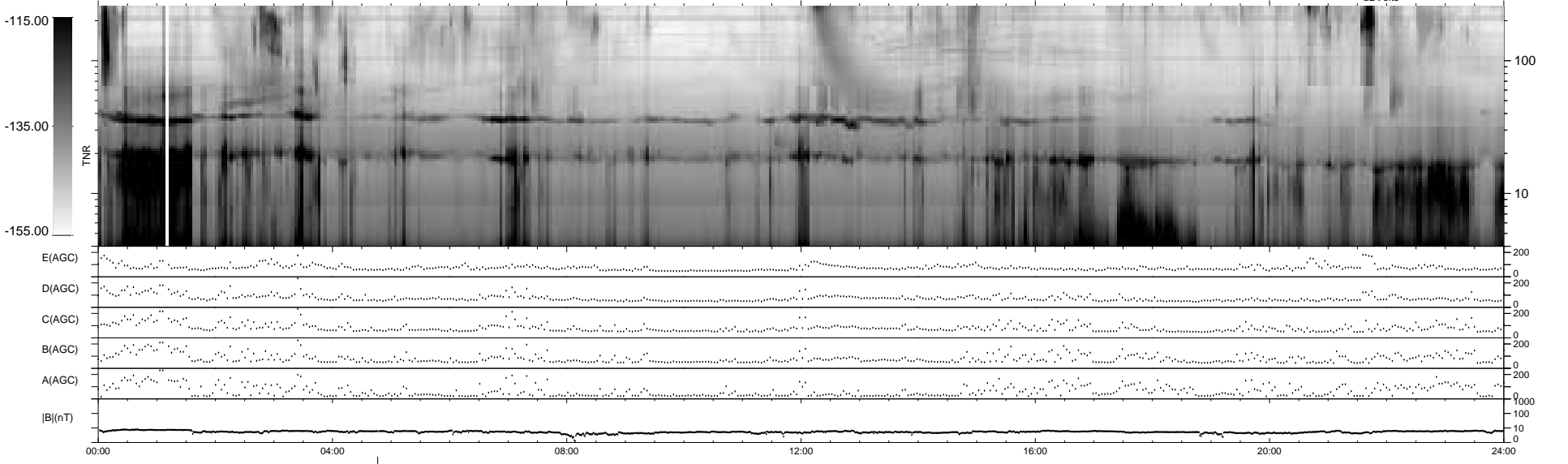
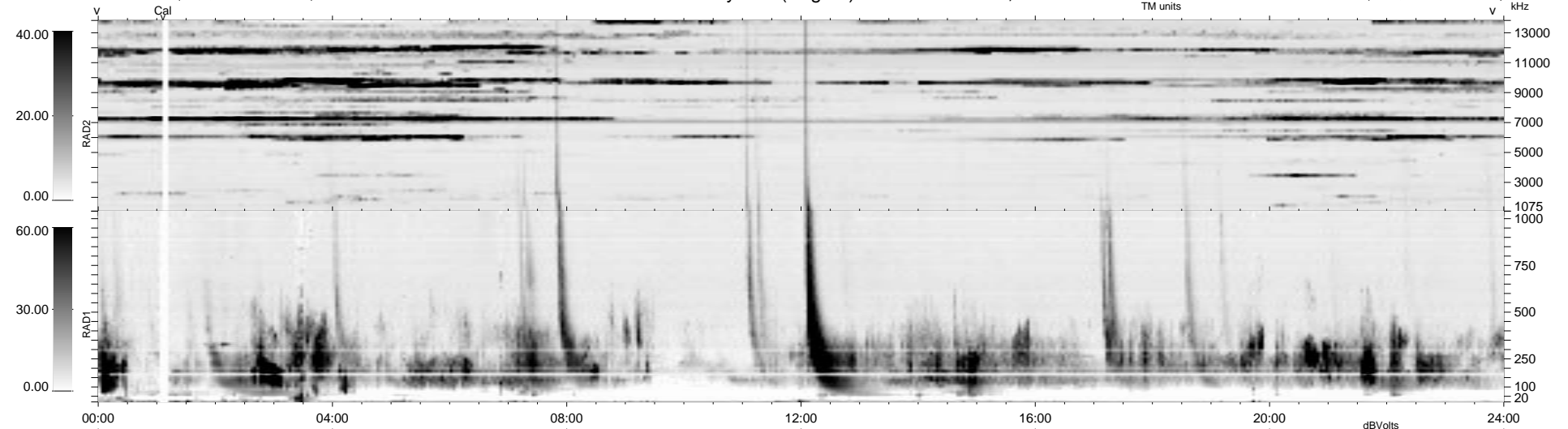


18 bad + 1859 good MF/1878MF projected (98%) - 1 missing MF
 Avg interval = 180 secs
 Re = - 57.42 (34.32, -46.02, -0.92 GSE)

1.7d VMS-SunOS LZ version = v01
 DAILY Fri Sep 26, 2008
 Re = 63.00 (39.70, -48.90, -1.30 GSE)

WIND/WAVES Summary Plot (Page 1) for 16-DEC-1994, DOY = 350



E(AGC) 0 200
 D(AGC) 0 200
 C(AGC) 0 200
 B(AGC) 0 200
 A(AGC) 0 200
 |B|(nT) 0 1000
 0 100
 0 10

RAD2
 Antenna Ey
 Mode LIN(4)
 SUM/SEP SEP
 Toggle OFF

RAD1
 Antenna Ex
 Mode LIN(4)
 SUM/SEP SEP
 Toggle OFF

TNR
 Antenna ExEz
 Mode A-32
 Sweep ABCDE