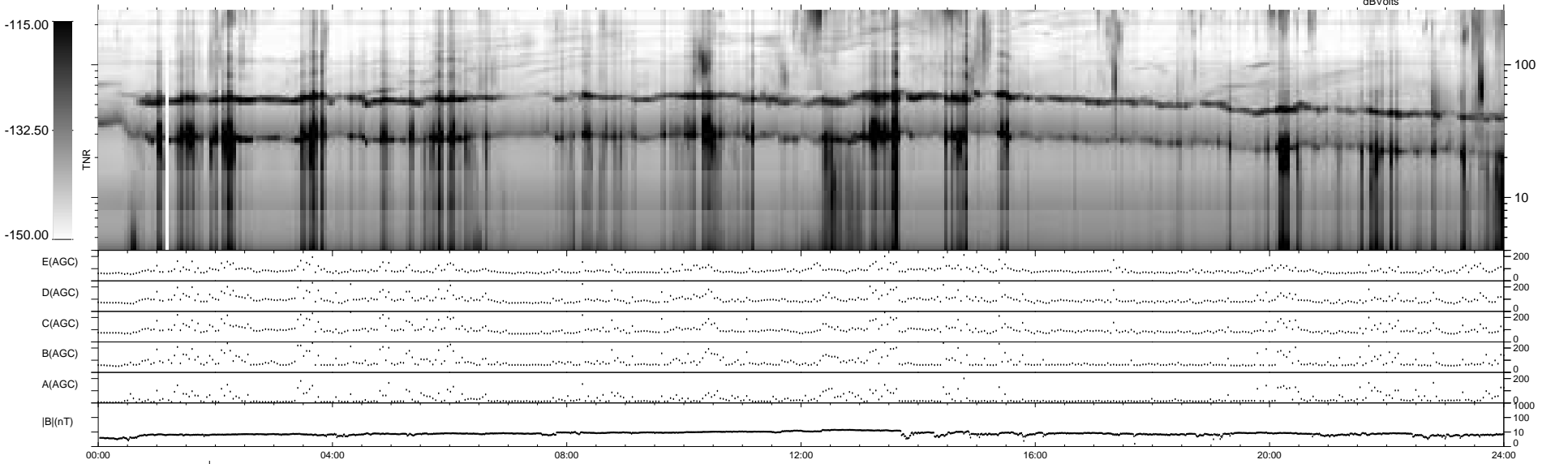
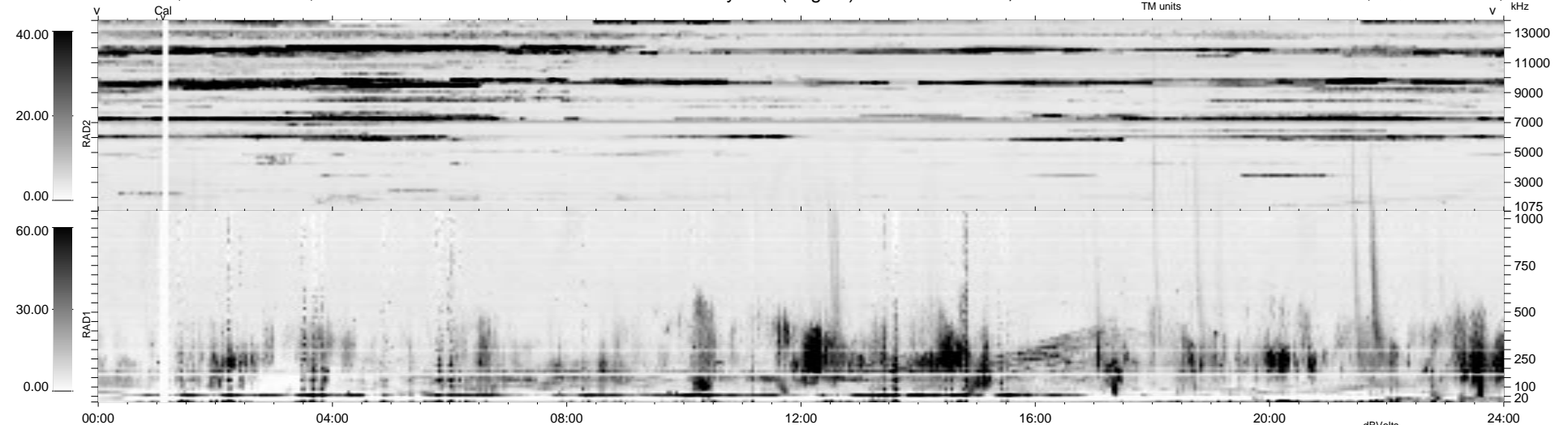


10 bad + 1867 good MF/1878MF projected (99%) - 1 missing MF
 Avg interval = 180 secs
 Re = - 48.55 (26.71, -40.53, -0.48 GSE)

1.7d VMS-SunOS LZ version = v01
 DAILY Fri Sep 26, 2008
 Re = 57.37 (34.28, -46.00, -0.91 GSE)

WIND/WAVES Summary Plot (Page 1) for 15-DEC-1994, DOY = 349



```

RAD2
Antenna Ey .....
Mode LIN(4) .....
SUM/SEP SEP .....
Toggle OFF .....

RAD1
Antenna Ex .....
Mode LIN(4) .....
SUM/SEP SEP .....
Toggle OFF .....

TNR
Antenna ExEz .....
Mode A-32 .....
Sweep ABCDE .....
  
```