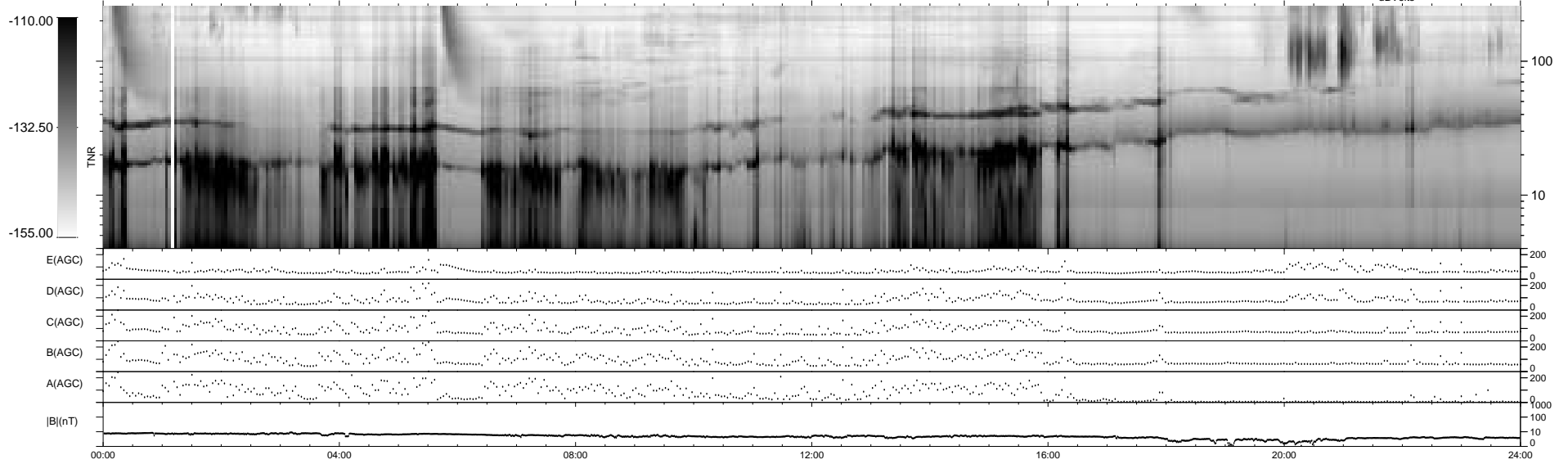
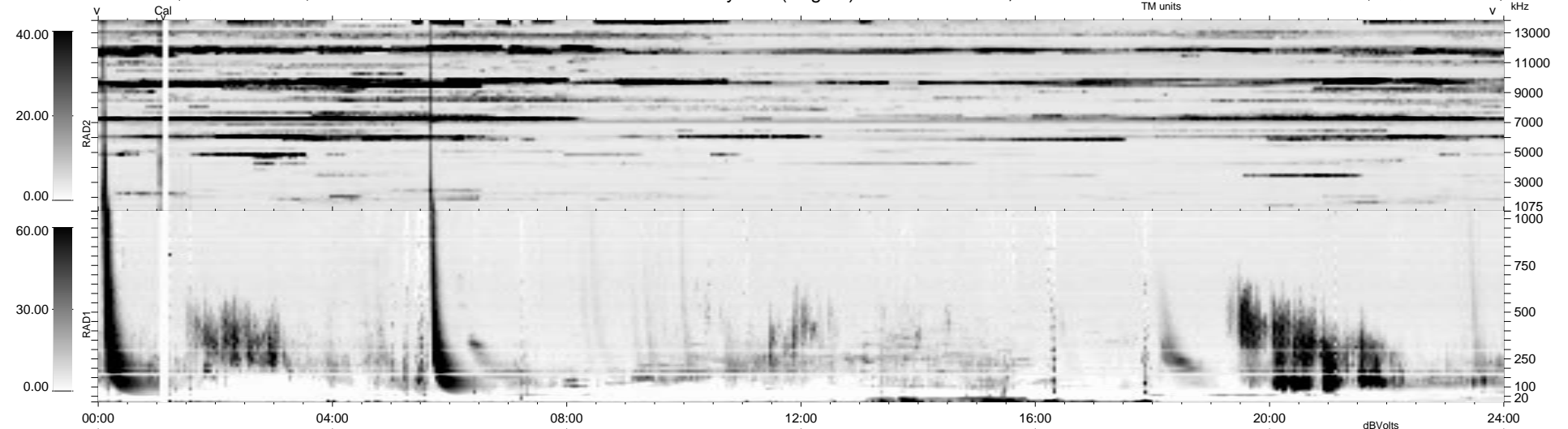


18 bad + 1861 good MF/1879MF projected (99%) - 0 missing MFs
 Avg interval = 180 secs
 Re = 35.04 (16.13, -31.10, 0.01 GSE)

1.7d VMS-SunOS LZ version = v01
 DAILY Fri Sep 26, 2008
 Re = 48.47 (26.65, -40.48, -0.47 GSE)

WIND/WAVES Summary Plot (Page 1) for 14-DEC-1994, DOY = 348



```

RAD2
Antenna Ey .....
Mode LIN(4) .....
SUM/SEP SEP .....
Toggle OFF .....

RAD1
Antenna Ex .....
Mode LIN(4) .....
SUM/SEP SEP .....
Toggle OFF .....

TNR
Antenna ExEz .....
Mode A-32 .....
Sweep ABCDE .....
  
```