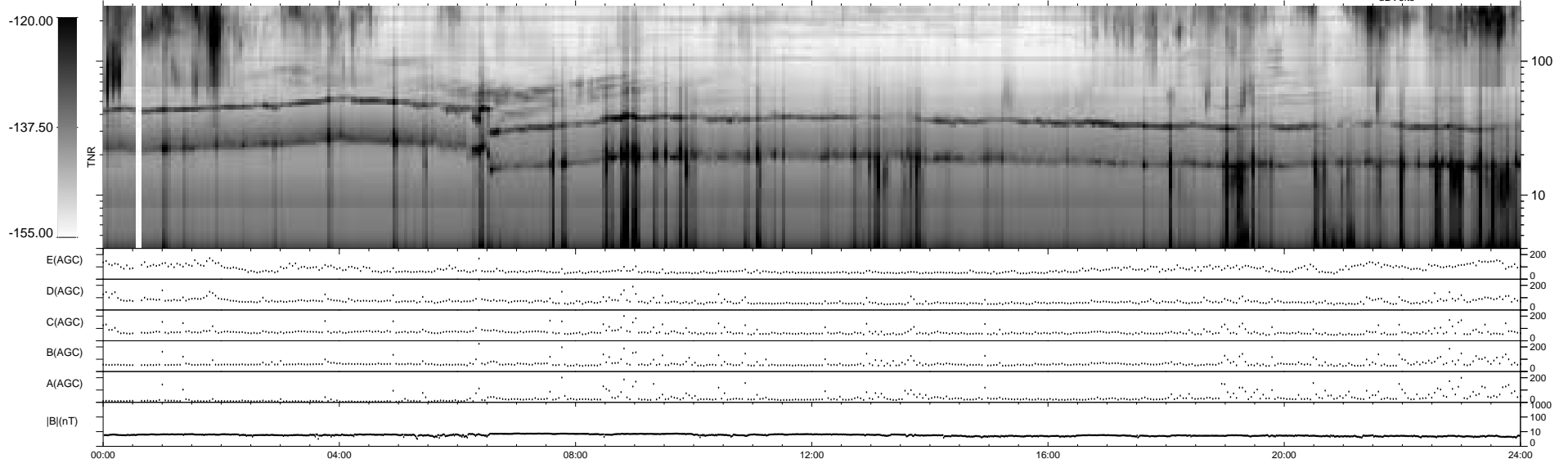
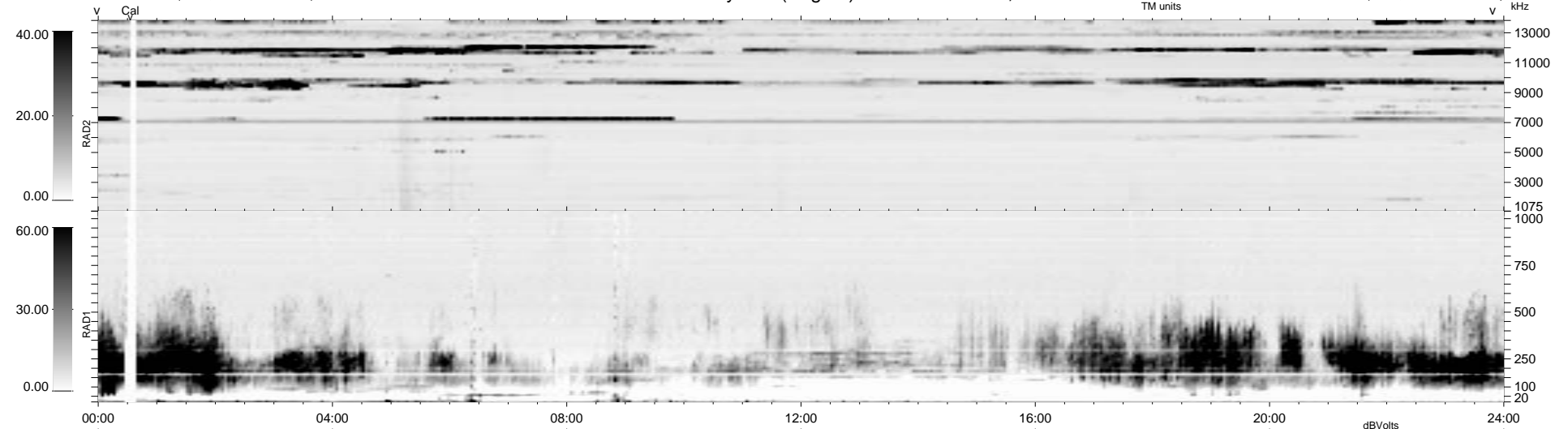


15 bad + 1864 good MF/1879MF projected (99%) - 0 missing MFs
 Avg interval = 180 secs
 Re = 53.76 (46.66, -26.62, -2.13 GSE)

1.7d VMS-SunOS LZ version = v01
 DAILY Fri Sep 26, 2008
 Re = 43.16 (38.89, -18.62, -1.99 GSE)

WIND/WAVES Summary Plot (Page 1) for 10-DEC-1994, DOY = 344



RAD2
 Antenna Ey
 Mode LIN(4)
 SUM/SEP SEP
 Toggle OFF
 RAD1
 Antenna Ex
 Mode LIN(4)
 SUM/SEP SEP
 Toggle OFF
 TNR
 Antenna ExEz
 Mode A-32
 Sweep ABCDE