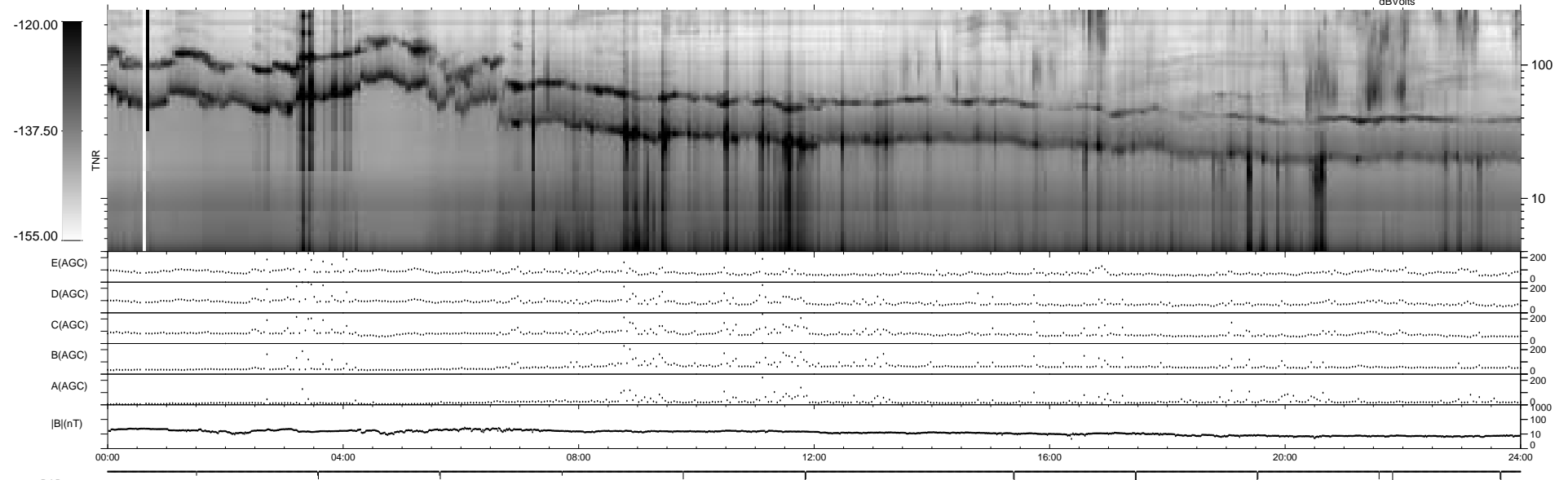
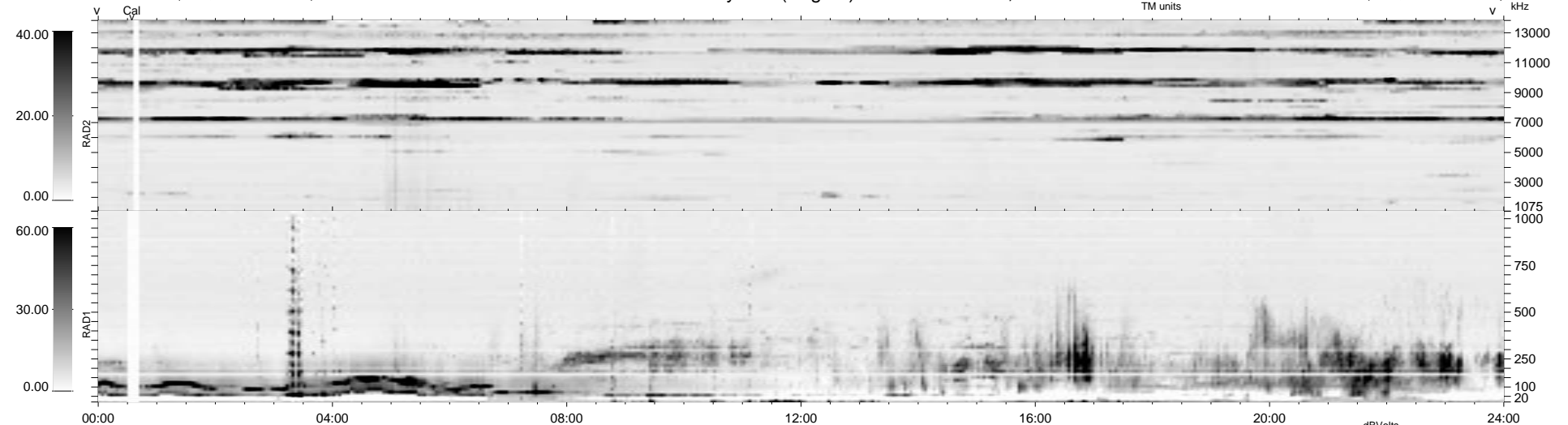


19 bad + 1860 good MF/1879MF projected (98%) - 0 missing MFs  
 Avg interval = 180 secs  
 Re = 65.17 (51.31, -40.15, -1.51 GSE)

1.7d VMS-SunOS LZ version = v01  
 DAILY Fri Sep 26, 2008  
 Re = 66.19 (53.35, -39.13, -1.78 GSE)

WIND/WAVES Summary Plot (Page 1) for 06-DEC-1994, DOY = 340



RAD2  
 Antenna Ey  
 Mode LIN(4)  
 SUM/SEP SEP  
 Toggle OFF

RAD1  
 Antenna Ex  
 Mode LIN(4)  
 SUM/SEP SEP  
 Toggle OFF

TNR  
 Antenna ExEz  
 Mode A-32  
 Sweep ABCDE