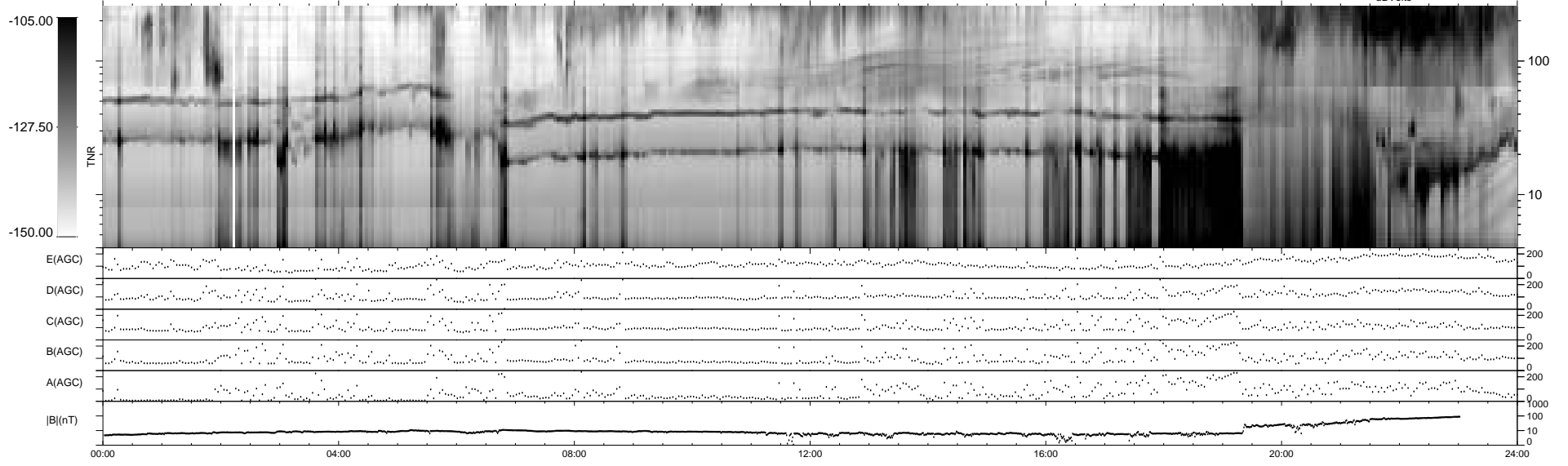
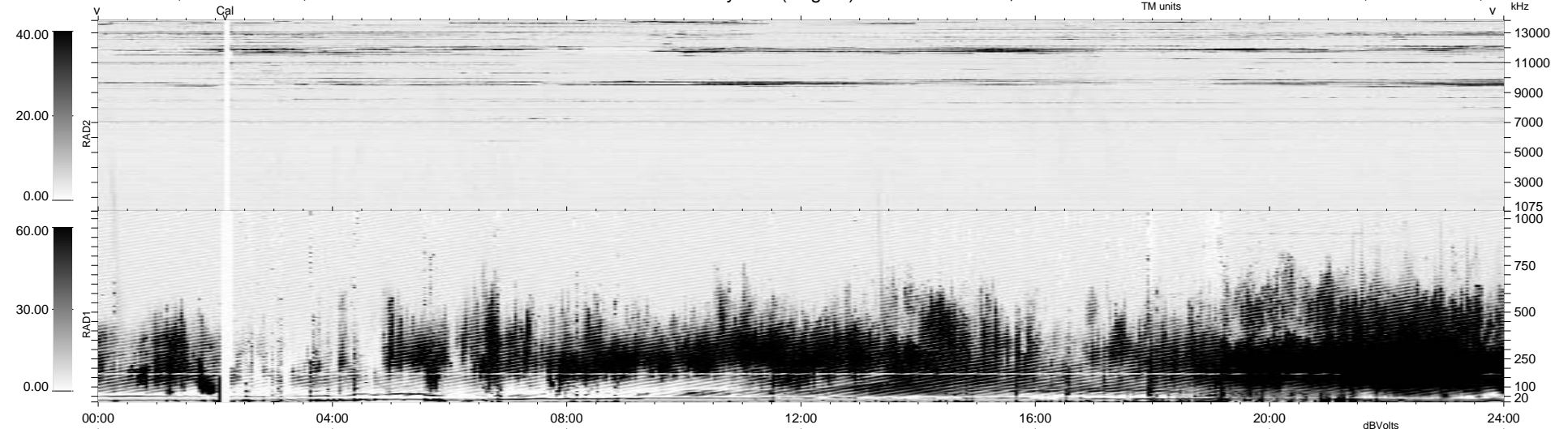


8 bad + 1870 good MF/1878MF projected (99%) - 0 missing MFs  
 Avg interval = 180 secs  
 Re = 33.37 (32.86, -5.54, -1.77 GSE)

1.7d VMS-SunOS LZ version = v01

### WIND/WAVES Summary Plot (Page 1) for 30-NOV-1994, DOY = 334

DAILY Fri Sep 26, 2008  
 Re = 6.09 (5.03, 3.41, -0.52 GSE)



```

RAD2
Antenna Ey .....
Mode LIN(1) .....
SUM/SEP SEP .....
Toggle OFF .....

RAD1
Antenna Ex .....
Mode LIN(1) .....
SUM/SEP SEP .....
Toggle OFF .....

TNR
Antenna ExEy .....
Mode A-32 ..... ExEz .....
Sweep ABCDE ..... AB-16 .....
  
```