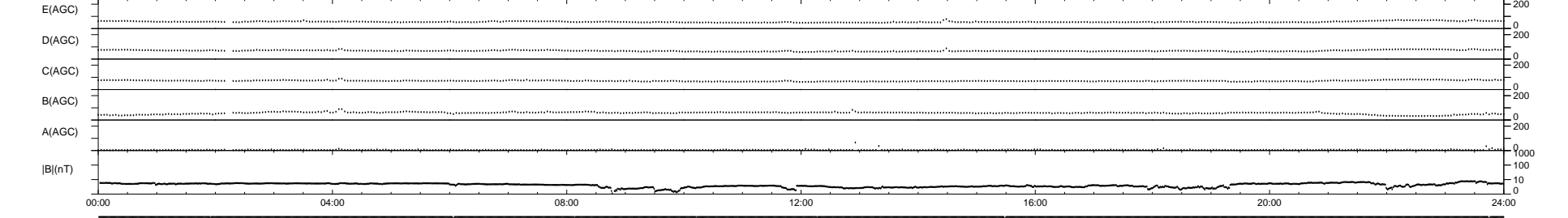
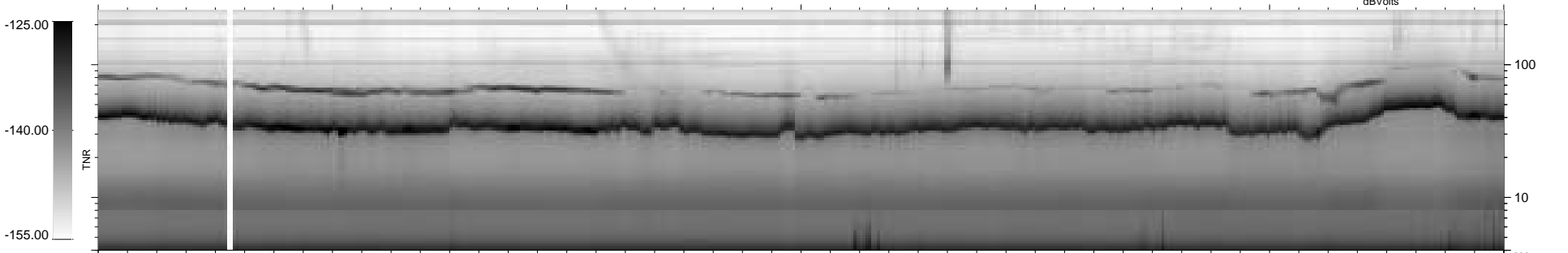
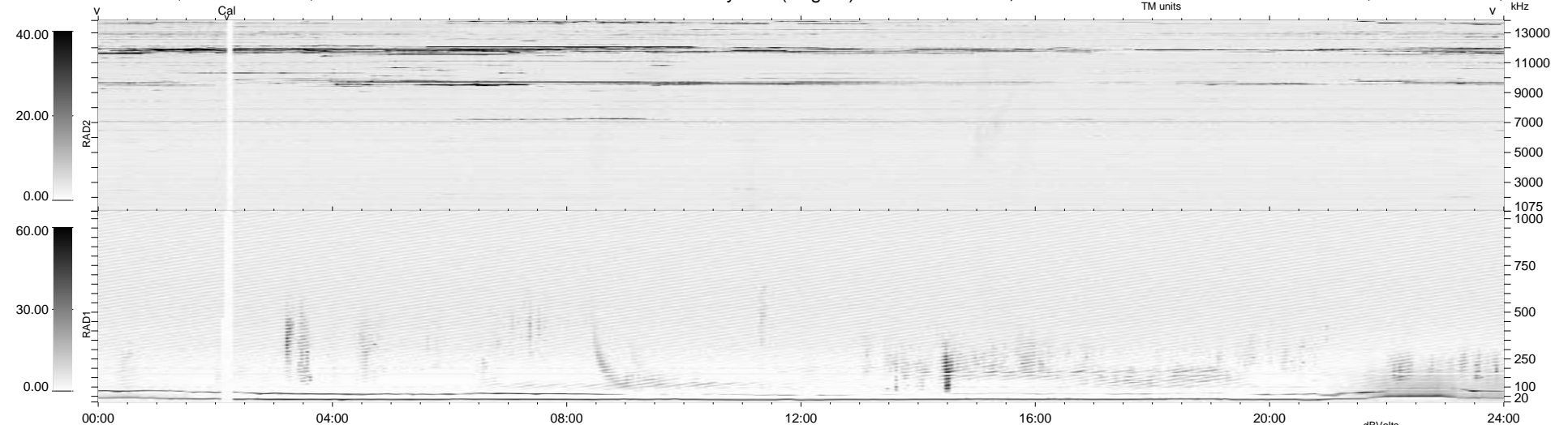


10 bad + 1868 good MF/1878MF projected (99%) - 0 missing MFs  
 Avg interval = 180 secs  
 Re = 75.71 (69.48, -29.96, -2.72 GSE)

1.7d VMS-SunOS LZ version = v01

### WIND/WAVES Summary Plot (Page 1) for 25-NOV-1994, DOY = 329

DAILY Fri Sep 26, 2008  
 Re = 72.56 (67.13, -27.40, -2.72 GSE)



RAD2  
 Antenna Ey .....  
 Mode LIN(1) .....  
 SUM/SEP SEP .....  
 Toggle OFF .....  
 RAD1  
 Antenna Ex .....  
 Mode LIN(1) .....  
 SUM/SEP SEP .....  
 Toggle OFF .....  
 TNR  
 Antenna ExEy .....  
 Mode A-32 .....  
 Sweep ABCDE .....