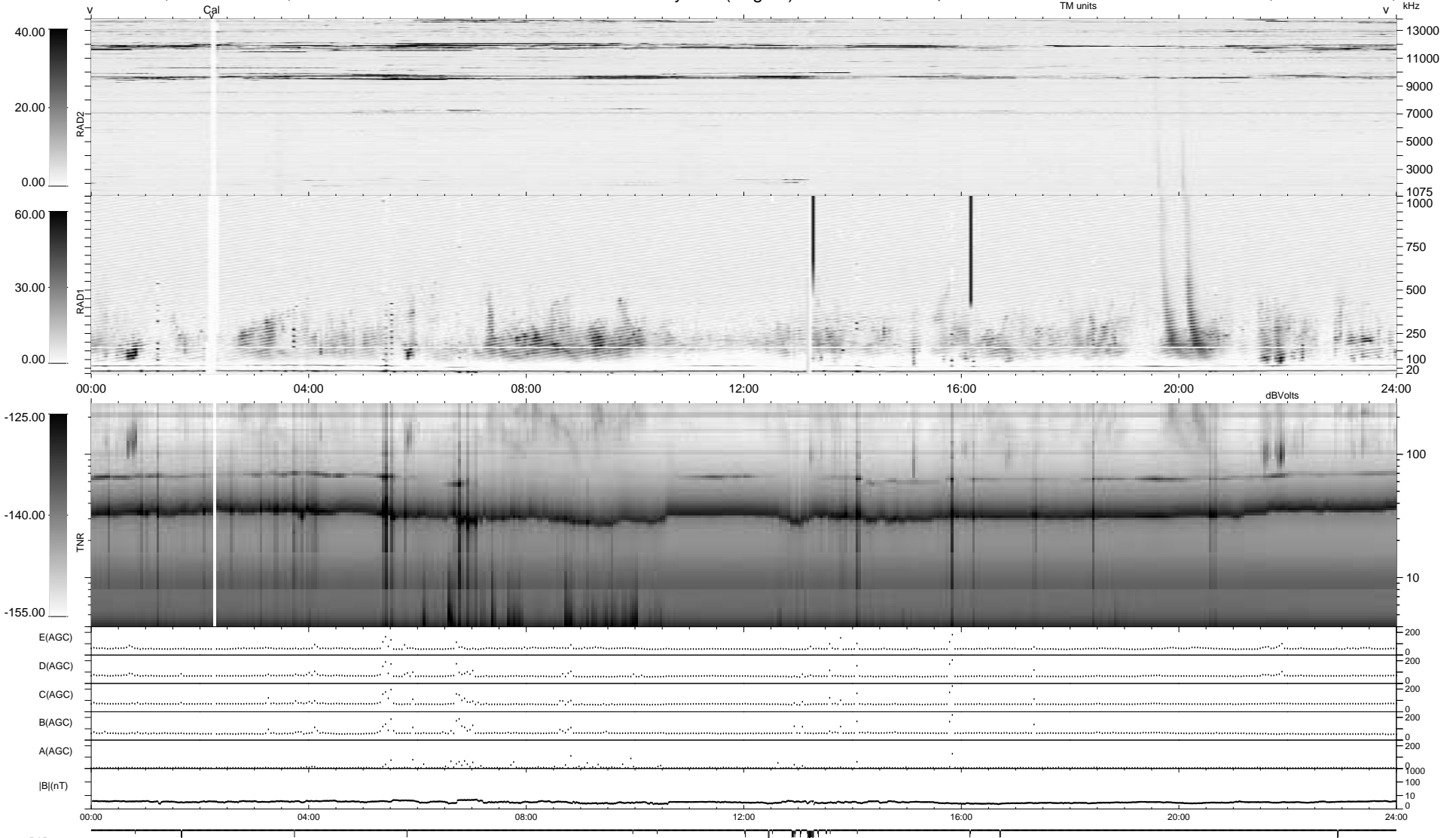


42 bad + 1836 good MF/1878MF projected (97%) - 0 missing MFs  
 Avg interval = 180 secs  
 Re = 76.46 (69.15, -32.54, -2.49 GSE)

1.7d VMS-SunOS LZ version = v01  
 DAILY Fri Sep 26, 2008  
 Re = 77.00 (70.14, -31.67, -2.64 GSE)

### WIND/WAVES Summary Plot (Page 1) for 23-NOV-1994, DOY = 327



```

RAD2
Antenna Ey .....
Mode LIN(1) .....
SUM/SEP SEP .....
Toggle OFF .....

RAD1
Antenna Ex .....
Mode LIN(1) .....
SUM/SEP SEP .....
Toggle OFF .....

TNR
Antenna ExEy .....
Mode A-32 .....
Sweep ABCDE .....
  
```