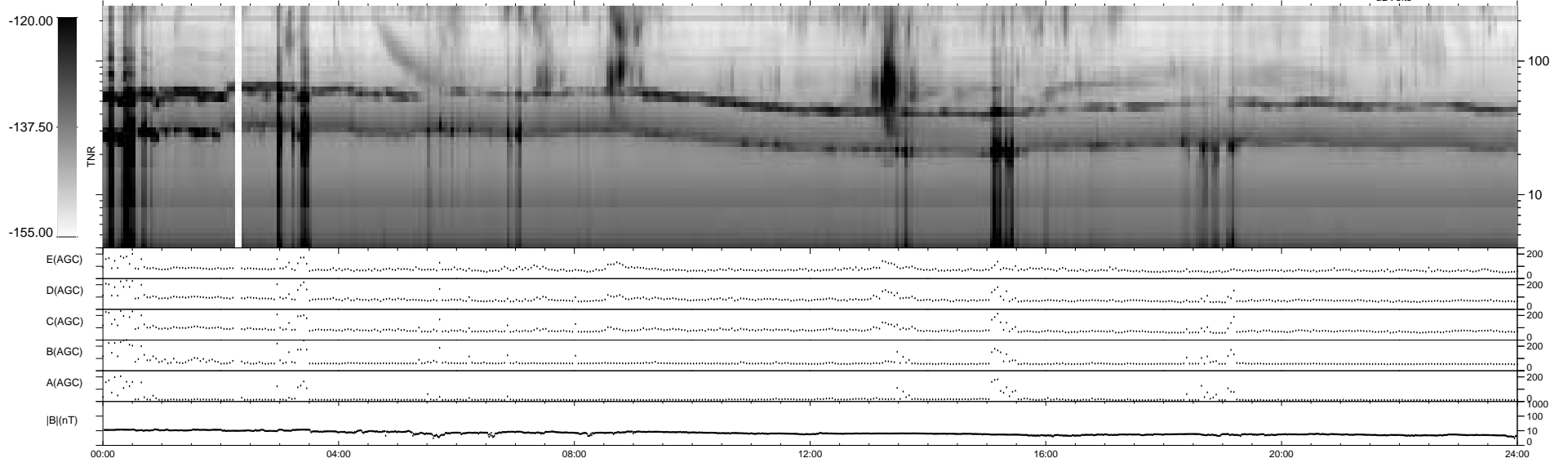
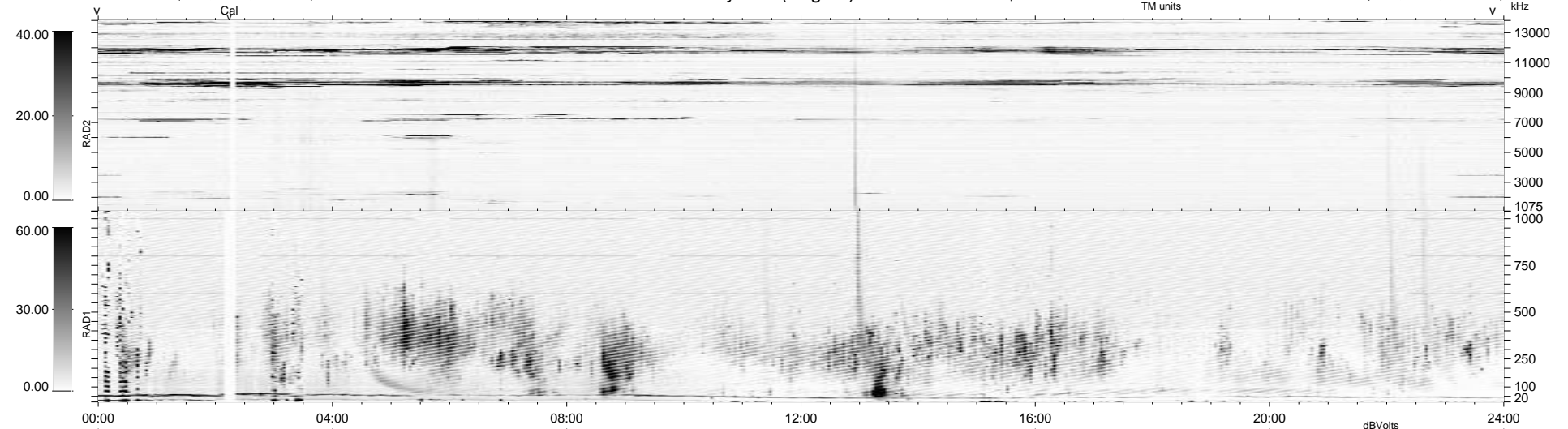


8 bad + 1870 good MF/1878MF projected (99%) - 0 missing MFs
 Avg interval = 180 secs
 Re = 63.11 (55.38, -30.22, -1.62 GSE)

1.7d VMS-SunOS LZ version = v01
 DAILY Fri Sep 26, 2008
 Re = 69.67 (61.93, -31.87, -1.98 GSE)

WIND/WAVES Summary Plot (Page 1) for 20-NOV-1994, DOY = 324



```

RAD2
Antenna Ey
Mode LIN(1)
SUM/SEP SUM
Toggle OFF

RAD1
Antenna Ex
Mode LIN(1)
SUM/SEP SUM
Toggle OFF

TNR
Antenna ExEy
Mode AB-16
Sweep ABCDE
  
```