

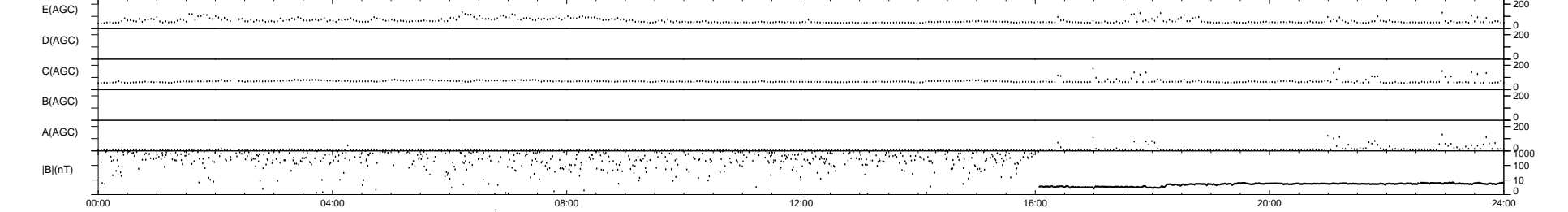
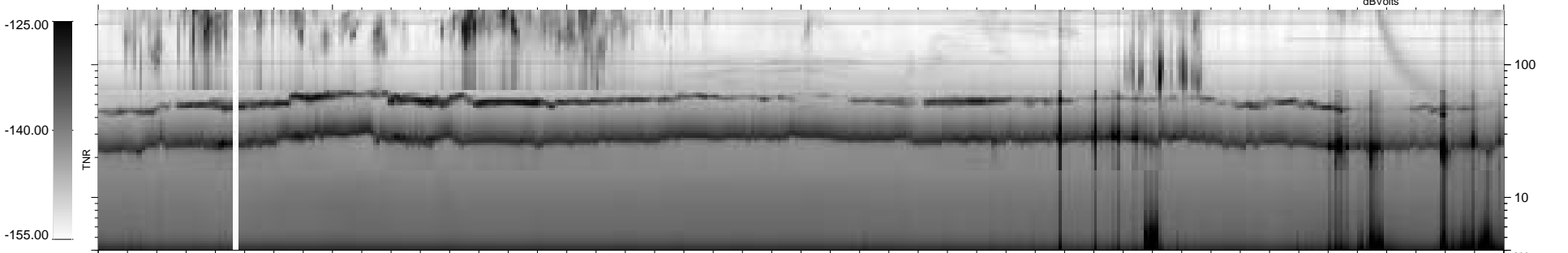
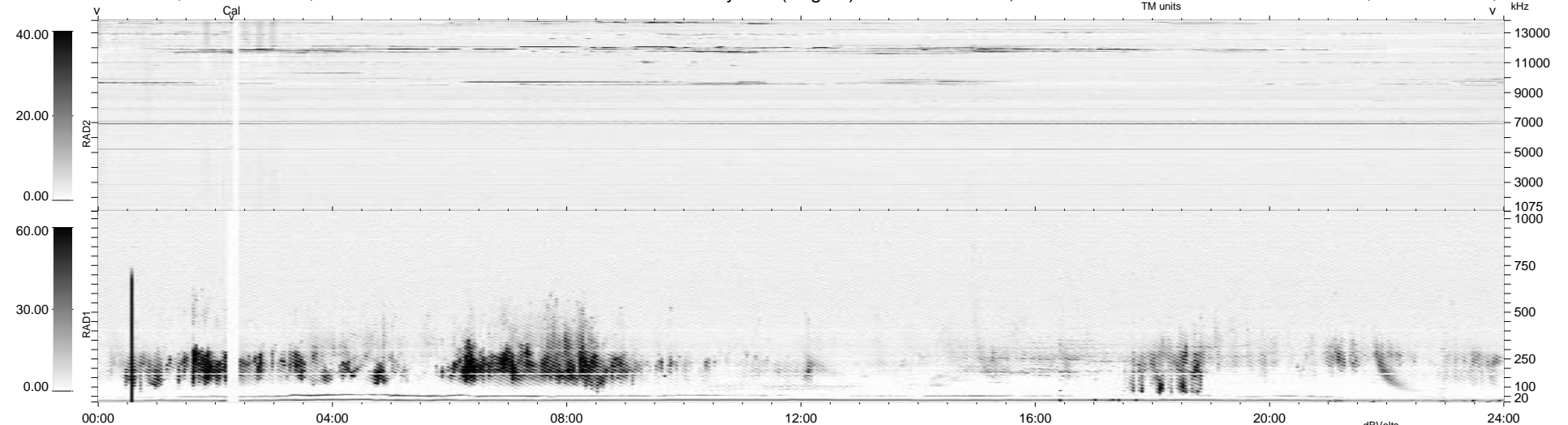
15 bad + 1862 good MF/1878MF projected (99%) - 1 missing MF  
 Avg interval = 180 secs  
 Re = 70.75 (69.90, -10.56, -2.76 GSE)

1.7d VMS-SunOS

LZ version = v01

WIND/WAVES Summary Plot (Page 1) for 12-NOV-1994, DOY = 316

DAILY Fri Sep 26, 2008  
 Re = 64.00 (63.43, -8.14, -2.66 GSE)



RAD2  
 Antenna Ey  
 Mode LIN(1)  
 SUM/SEP SEP  
 Toggle OFF  
 RAD1  
 Antenna Ex  
 Mode LIN(1)  
 SUM/SEP SEP  
 Toggle OFF  
 TNR  
 Antenna ExEy  
 Mode A-32  
 Sweep ACE