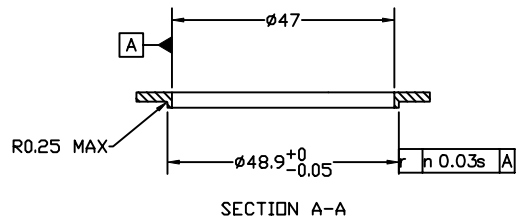
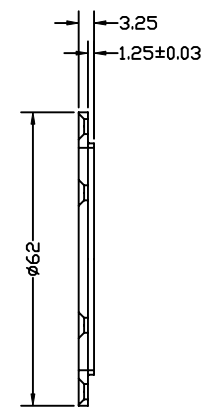
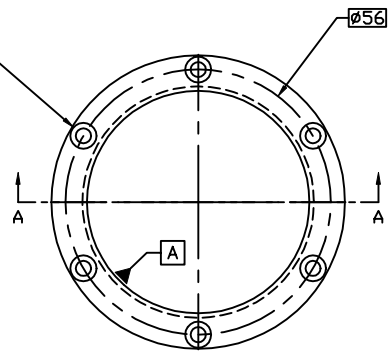


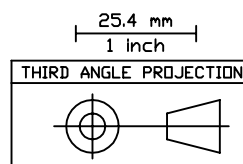
4 3 2 1

REVISIONS			
REV.	DESCRIPTION	DATE	APPROVED
A	BASELINE RELEASE	6/8/98	

6X Ø3.2 THRU
CSK Ø5.5X90°
EQUALLY SPACED
j h 0.15m A



NOTES, UNLESS SPECIFIED OTHERWISE:
1. REMOVE BURRS & BREAK SHARP EDGES, R0.2 MAX
2. IDENTIFY PART BY BAGGING AND TAGGING



1	A/R	ALUMINUM, 6061-T6		QQ-A-250/11
ITEM#	QTY	PART NUMBER	NOMENCLATURE	MATERIAL SPECIFICATION
TOLERANCES (EXCEPT AS SPECIFIED)		DO NOT SCALE DRAWING		<i>Space Sciences Laboratory</i> UNIVERSITY OF CALIFORNIA, BERKELEY, USA
OVER	TO	TOLERANCE	METRIC DRAWING (UNITS: mm)	
0	49.99	±0.1	INTERPRET PER ANSI Y14.5-1994	DWG TITLE CLAMP, CCD PCB WIC CCD VISIBLE TEST (GSE)
50	249.9	±0.5	WELDING SYMBOLS PER ANSI/AWS A2.4-79	
250	-	±1	APPROVALS	DATE
ANGLES		-	DRAWN K. KROMER	6/8/98
SURFACE FINISH		0.8 ✓	CHECKED	ISSUED
SURFACE TREATMENT		GOLD ALDINE 600 PER MIL-C-5541, CLASS 1	MASS	8g
DWG TITLE		CLAMP, CCD PCB		DWG. NO. 8345-A5
DWG. NO.		8345-A5		REV A
SHEET 1 OF 1		SCALE FULL		

D
C
B
A

D
C
B
A

4 3 2 1