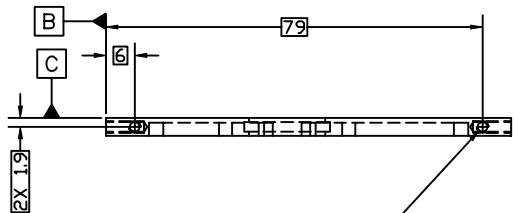
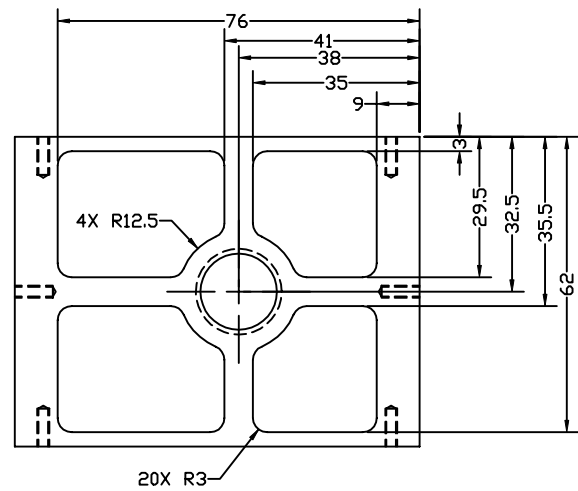
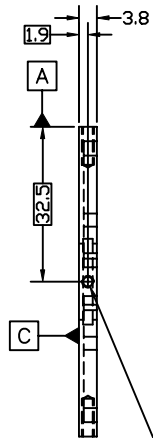
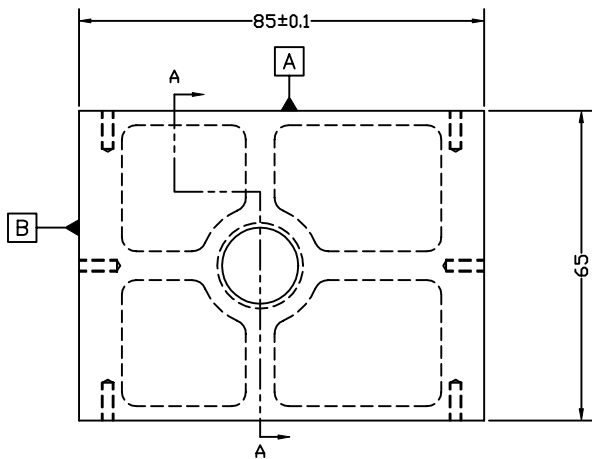
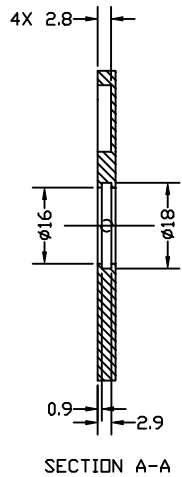
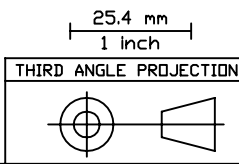


REVISIONS			
REV.	DESCRIPTION	DATE	APPROVED
A	BASELINE RELEASE	5/29/98	



DRILL & TAP FOR M2.5X0.45  
MIN 8. DEEP, BOTH SIDES OF PART  
j 0.15m AC

2X DRILL & TAP FOR M2.5X0.45  
8. DEEP, BOTH SIDES OF PART  
j 0.15m BC



1	A/R	ALUMINUM, 6061-T6	QQ-A-250/12
ITEM#	QTY	PART NUMBER	NOMENCLATURE
TOLERANCES (EXCEPT AS SPECIFIED)		DO NOT SCALE DRAWING METRIC DRAWING (UNITS: mm)	
OVER	TO	TOLERANCE	<i>Space Sciences Laboratory</i> UNIVERSITY OF CALIFORNIA, BERKELEY, USA DWG TITLE <b>LAMP PLATE</b> <b>FUV SI UV TEST SOURCE</b>
0	49.99	±0.1	
50	249.9	±0.2	INTERPRET PER ANSI Y14.5-1994 WELDING SYMBOLS PER ANSI/AVS A2.4-79
250	-	±1 ±1*	
ANGLES		-	APPROVALS
SURFACE FINISH		1.6√	DATE
SURFACE TREATMENT		GOLD ALODINE 600 PER MIL-C-5541, CLASS 3	DRAWN K. KROMER
MASS		32.3g	CHECKED
			ISSUED
SIZE	PROGRAM	DWG. NO.	REV
B	IMAGE	8334-A5	A
SCALE FULL		SHEET 1 OF 1	