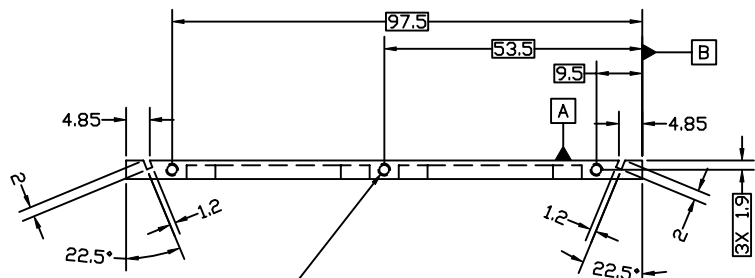
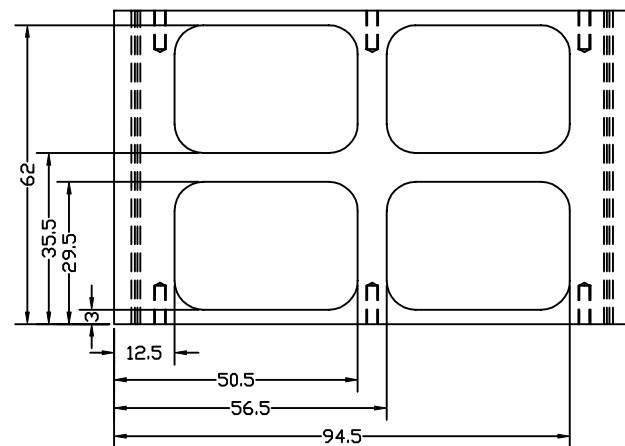
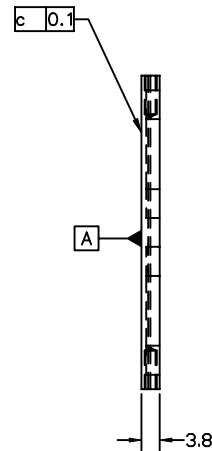
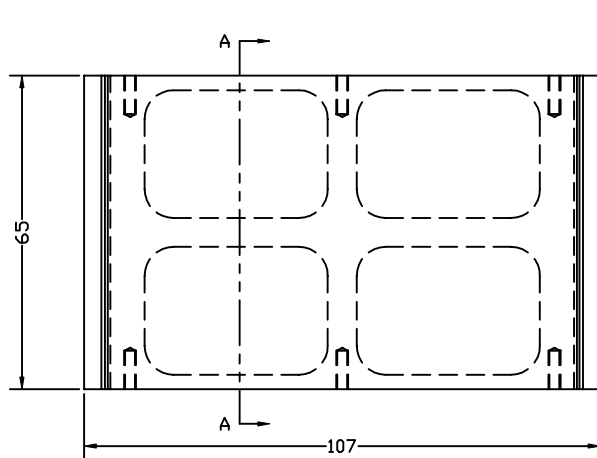
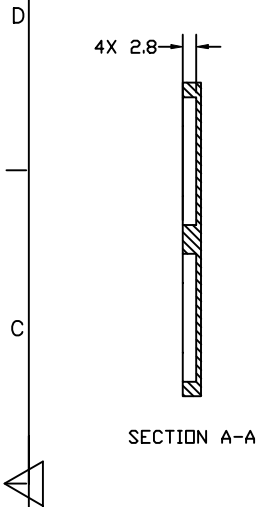
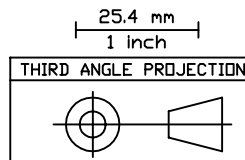


4 3 2 1

REVISIONS			
REV.	DESCRIPTION	DATE	APPROVED
A	BASELINE RELEASE	5/28/98	



6X DRILL & TAP M2.5X0.45
MIN 8. DEEP, 2 SIDES
i 0.15m AB



NOTES, UNLESS SPECIFIED OTHERWISE:
1. REMOVE BURRS & BREAK SHARP EDGES, R0.15 MAX
2. SURFACE FINISH: BEAD BLAST SURFACE A TO ELIMINATE FINISH MARKS. GOLD PLATE PART PER MIL-G-45204, TYPE II, GRADE C, CLASS 2

1	A/R	ALUMINUM, 6061-T6	QQ-A-250/12
ITEM#	QTY	PART NUMBER	NOMENCLATURE
TOLERANCES (EXCEPT AS SPECIFIED)		DO NOT SCALE DRAWING METRIC DRAWING (UNITS: mm)	
OVER	TO	TOLERANCE	Space Sciences Laboratory UNIVERSITY OF CALIFORNIA, BERKELEY, USA DWG TITLE MIRROR PLATE FUV SI UV TEST SOURCE
0	49.99	±0.1	
50	249.9	±0.5	
250		±1	INTERPRET PER ANSI Y14.5-1994 WELDING SYMBOLS PER ANSI/AWS A2.4-79
ANGLES		±1°	APPROVALS
SURFACE FINISH		1.6√	DATE
SURFACE TREATMENT		SEE NOTES	DRAWN K. KROMER 5/28/98
MASS			CHECKED
			ISSUED
SIZE	PROGRAM	DWG. NO.	REV
B	FUSE	8332-A5	A
SCALE	FULL		SHEET 1 OF 1

4 3 2 1