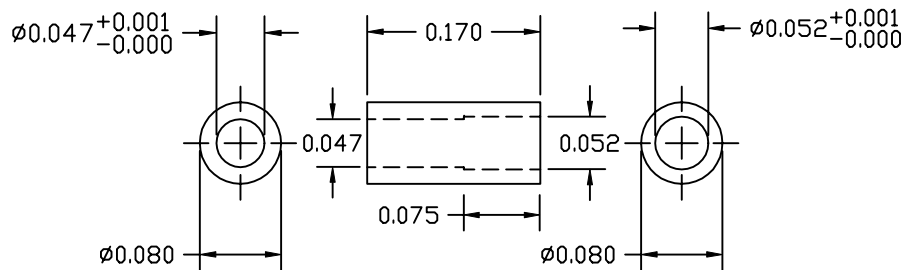


REVISIONS			
REV.	DESCRIPTION	DATE	APPROVED
A	BASELINE RELEASE	5/19/98	
B	ADDED .047" I.D.	10/30/98	



1	A/R		BRASS, C26800 OR C26000															
ITEM#	QTY	PART NUMBER	NOMENCLATURE	MATERIAL SPECIFICATION														
<table border="1"> <thead> <tr> <th colspan="3">TOLERANCES (EXCEPT AS SPECIFIED)</th> </tr> <tr> <th>OVER</th> <th>TO</th> <th>TOLERANCE</th> </tr> </thead> <tbody> <tr> <td>0</td> <td>1.999</td> <td>±0.004</td> </tr> <tr> <td>2</td> <td>9.999</td> <td>±0.02</td> </tr> <tr> <td>10</td> <td>-</td> <td>±0.04</td> </tr> </tbody> </table>		TOLERANCES (EXCEPT AS SPECIFIED)			OVER	TO	TOLERANCE	0	1.999	±0.004	2	9.999	±0.02	10	-	±0.04	DO NOT SCALE DRAWING ENGLISH DRAWING (UNITS: inches)  INTERPRET PER ANSI Y14.5-1982 WELDING SYMBOLS PER ANSI/AWS A24-79	<i>Experimental Astrophysics Group</i> UNIVERSITY OF CALIFORNIA, BERKELEY, USA
TOLERANCES (EXCEPT AS SPECIFIED)																		
OVER	TO	TOLERANCE																
0	1.999	±0.004																
2	9.999	±0.02																
10	-	±0.04																
SURFACE FINISH		32	APPROVALS	DATE														
SURFACE TREATMENT		NONE	DRAWN K. KROMER	5/19/98														
MASS			CHECKED															
			ISSUED															
			SIZE	IMAGE														
			IMAGE	DWG. NO. 8329-A4														
			SCALE 8:1	REV B														
				SHEET 1 OF 1														