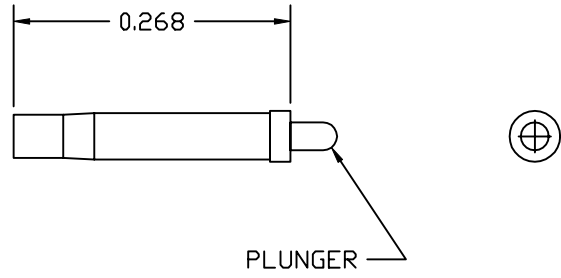




25.4 mm
1 inch

REVISIONS			
REV.	DESCRIPTION	DATE	APPROVED
A	BASELINE RELEASE	5/19/98	



NOTES:

1. CUT BODY TO LENGTH INDICATED
2. IDENTIFY PART BY BAGGING AND TAGGING.
3. MANUFACTURE FROM OSTBY-BARTON #C-S-R POGO.

1	A/R	C-S-R	POGO	AS SUPPLIED																		
ITEM#	QTY	PART NUMBER	NOMENCLATURE	MATERIAL SPECIFICATION																		
<table border="1"> <thead> <tr> <th colspan="3">TOLERANCES (EXCEPT AS SPECIFIED)</th> </tr> <tr> <th>OVER</th> <th>TO</th> <th>TOLERANCE</th> </tr> </thead> <tbody> <tr> <td>0</td> <td>1.999</td> <td>±0.004</td> </tr> <tr> <td>2</td> <td>9.999</td> <td>±0.02</td> </tr> <tr> <td>10</td> <td>-</td> <td>±0.04</td> </tr> <tr> <td colspan="2">ANGLES</td> <td>±1°</td> </tr> </tbody> </table>			TOLERANCES (EXCEPT AS SPECIFIED)			OVER	TO	TOLERANCE	0	1.999	±0.004	2	9.999	±0.02	10	-	±0.04	ANGLES		±1°	DO NOT SCALE DRAWING ENGLISH DRAWING (UNITS: inches) INTERPRET PER ANSI Y14.5-1982 WELDING SYMBOLS PER ANSI/ANS A24-79	
TOLERANCES (EXCEPT AS SPECIFIED)																						
OVER	TO	TOLERANCE																				
0	1.999	±0.004																				
2	9.999	±0.02																				
10	-	±0.04																				
ANGLES		±1°																				
SURFACE FINISH 32 ✓			<i>Experimental Astrophysics Group</i> UNIVERSITY OF CALIFORNIA, BERKELEY, USA																			
SURFACE TREATMENT			APPROVALS	DATE																		
MASS			DRAWN K. KROMER	5/19/98																		
			CHECKED																			
			ISSUED																			
SIZE A		PROGRAM IMAGE	DWG. NO. 8328-A4	REV A																		
SCALE 8:1		SHEET 1 OF 1																				

