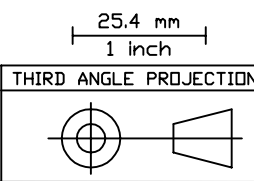


REVISIONS			
REV	DESCRIPTION	DATE	BY
D	CHANGED Ø1.8 THRU HOLES TO Ø2.2, AND REMOVED 2. ADDED LETTERING TO PART	6/16/98	
E	ADDED HOLE FOR -12V POGO	11/4/98	HDH

- NOTES, UNLESS SPECIFIED OTHERWISE:
1. REMOVE BURRS & BREAK SHARP EDGES, R0.15 MAX
 2. IDENTIFY PART BY BAGGING AND TAGGING
 3. MATERIAL CERTS REQUIRED
 4. "XXX" INDICATES SERIAL # OF PART. BEGINNING SN TO BE SPECIFIED ON PURCHASE ORDER. EACH SUCCESSIVE PART TO BE INDEXED BY ONE.



1	A/R		ALUMINUM, 6061-T6	QQ-A-250/11
ITEM#	QTY	PART NUMBER	NOMENCLATURE	MATERIAL SPECIFICATION
TOLERANCES (EXCEPT AS SPECIFIED)			DO NOT SCALE DRAWING METRIC DRAWING (UNITS: mm)	
OVER	TO	TOLERANCE	INTERPRET PER ANSI Y14.5-1994 WELDING SYMBOLS PER ANSI/AWS A2.4-79	
0	49.99	±0.1		
50	249.9	±0.5	APPROVALS	
250		±1		
ANGLES			DATE	
SURFACE FINISH 1.6√			5/6/98	
SURFACE TREATMENT			DRAWN K. KROMER	
GOLD ALODINE 600 PER MIL-C-5541, CLASS 3			CHECKED	
MASS 150.2g			ISSUED	
			SIZE B	PROGRAM IMAGE
			DWG. NO. 8324-A5	REV E
			SCALE FULL	SHEET 1 OF 2

Space Sciences Laboratory
UNIVERSITY OF CALIFORNIA, BERKELEY, USA

**BACKPLATE
MENA DETECTOR**

4

3

2

1