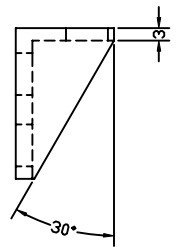
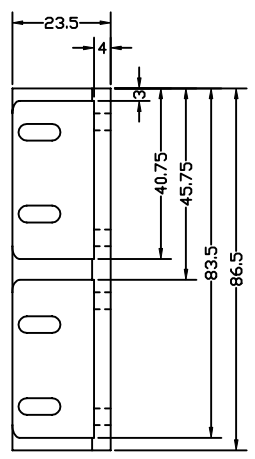
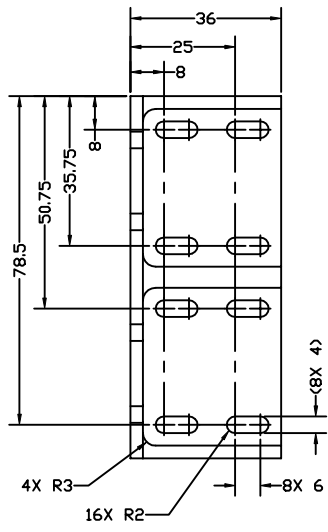
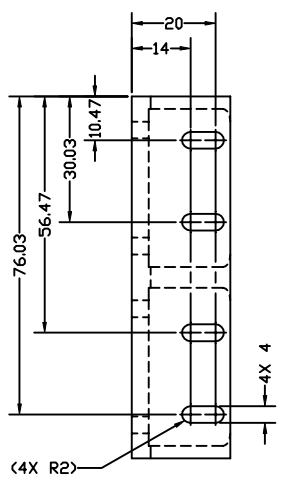
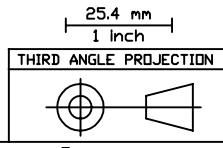


REVISIONS			
REV.	DESCRIPTION	DATE	APPROVED
A	BASELINE RELEASE	4/14/98	



NOTES, UNLESS SPECIFIED OTHERWISE:
 1. REMOVE BURRS & BREAK SHARP EDGES, R0.15 MAX
 2. IDENTIFY PART BY BAGGING AND TAGGING
 3. MATERIAL CERTS REQUIRED



1	A/R	ALUMINUM ALLOY, 6061-T651	QQ-A-250/11
ITEM#	QTY	PART NUMBER	NOMENCLATURE
TOLERANCES (EXCEPT AS SPECIFIED):		DO NOT SCALE DRAWING	
OVER	TD	METRIC DRAWING	
0	49.99	(UNITS: MM)	
250	249.9	INTERPRET PER ANSI Y14.5-1994	
ANGLES	TOLERANCE	WELDING SYMBOLS PER ANSI/ASME A24-79	
-	±0.1	APPROVALS	DATE
	±0.2		
	±1*	DRAWN K. KROMER	4/14/98
SURFACE FINISH 1.6		CHECKED	
SURFACE TREATMENT		ISSUED	
GOLD ALDINE 600		SCALE FULL	
PER MIL-C-5541, CLASS 3		SIZE B	PROGRAM
MASS 54.6g		IMAGE	DWG. NO. 8316-A4
		REV A	
		SHEET 1 OF 1	

Space Sciences Laboratory
 UNIVERSITY OF CALIFORNIA, BERKELEY, USA

DWG TITLE
HVPS SUPPORT BRACKET
FUV WIC