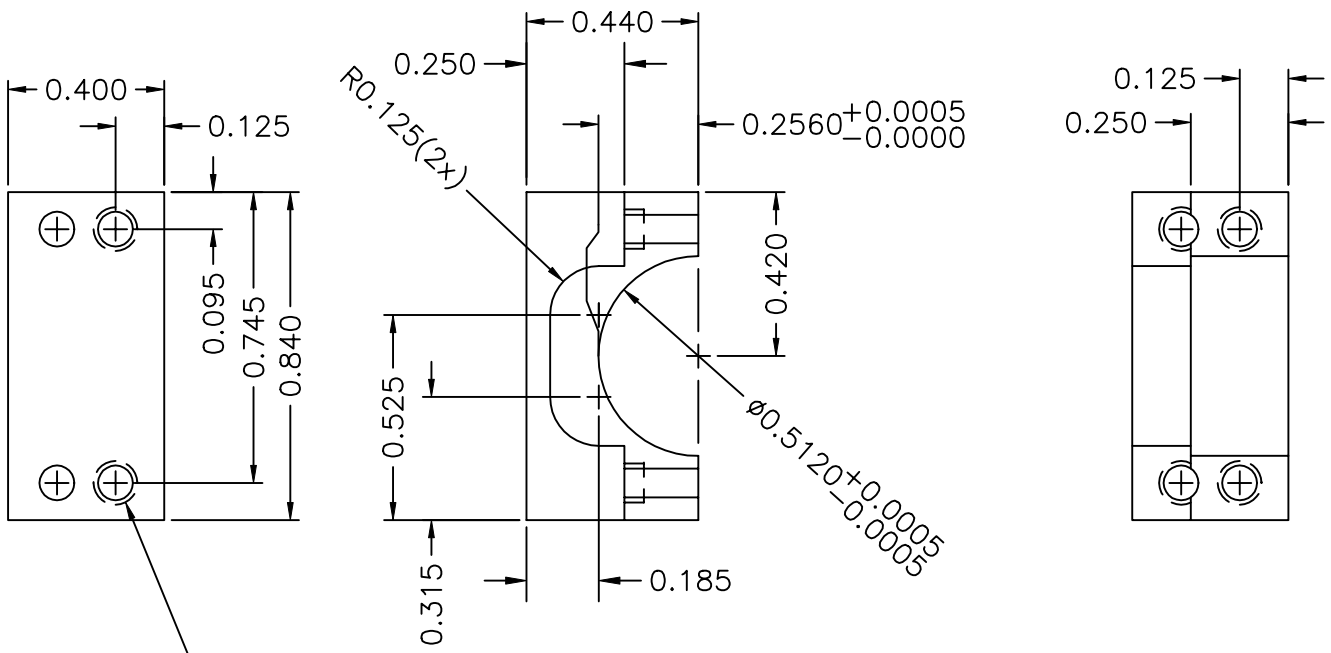
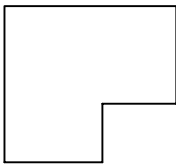
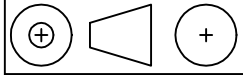


REVISION	DESCRIPTION	DATE
----------	-------------	------



4-40 UNC-2B DRILL
THRU TAP 0.30 DEEP
AS SHOWN(4x)

U.S. STD. THIRD ANGLE PROJECTION



UNLESS OTHERWISE SPECIFIED
DIMENSIONS ARE IN INCHES
BILATERAL TOLERANCES ARE:
.XX = .02° ANGLES SURFACES
.XXX = .005° 0.5° 32

MATERIAL	6061-T6 ALUMINUM	DRAWN	P. TURIN	CONTRACT /BUDGET NR	IMAGE GEO	TITLE	GEO SHORT TUBE CLAMP	SHEET	1/1	SPACE SCIENCES LABORATORIES UNIVERSITY OF CALIFORNIA, BERKELEY BERKELEY, CA 94720 (415) 642-7297
FINISH	GOLD ALODINE	DATE	2/10/98	SCALE - DO NOT SCALE -	1:1	DRAWING NR.	8266-A4	REVISION	A	