

4

3

2

1

REVISIONS			
REV.	DESCRIPTION	DATE	APPROVED
A	BASELINE RELEASE	12/12/97	

D

D

C

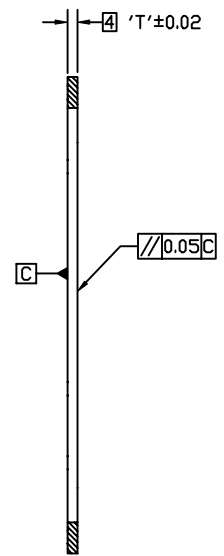
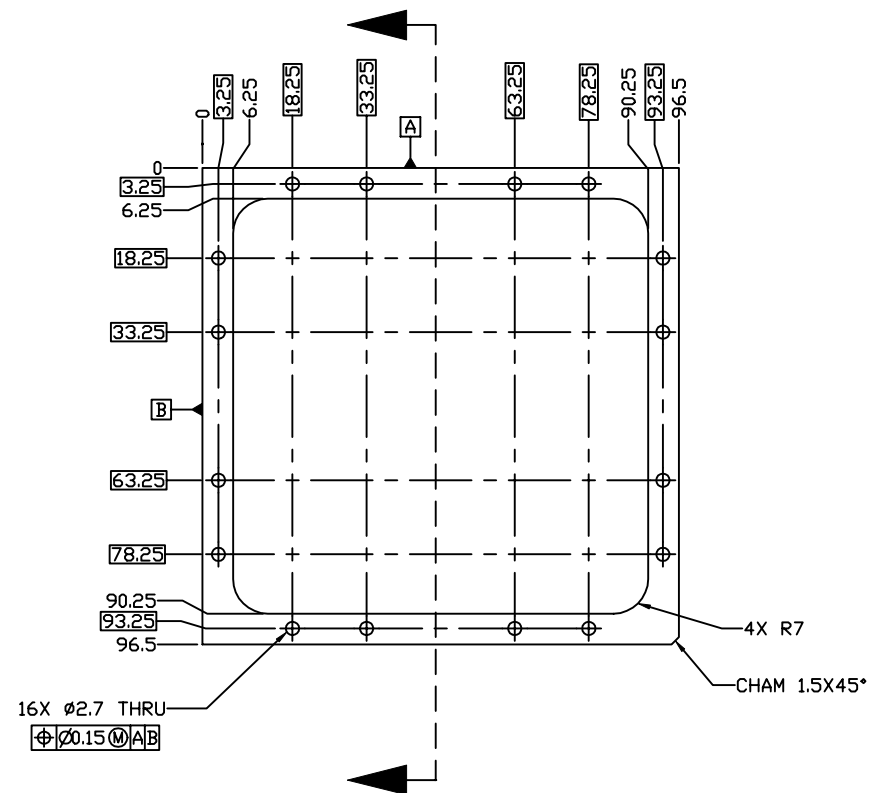
C

B

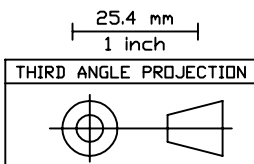
B

A

A



- NOTES, UNLESS SPECIFIED OTHERWISE:
 1. REMOVE BURRS & BREAK SHARP EDGES
 2. IDENTIFY PART BY BAGGING AND TAGGING
 3. MATERIAL CERTS REQUIRED
 4. THICKNESS 'T' IS DASH NO. OF PART IN TENTHS OF A mm, TO BE SPECIFIED AS REQUIRED. (FOR 8153-25, 'T'=2.5mm)



1	A/R	303 STAINLESS STEEL	QQ-S-763
ITEM#	QTY	PART NUMBER	NOMENCLATURE
TOLERANCES (EXCEPT AS SPECIFIED)		DO NOT SCALE DRAWING METRIC DRAWING (UNITS: mm)	
OVER	TO	TOLERANCE	
0	49.99	±0.1	
50	249.9	±0.5	
250	-	±1	
ANGLES		±1°	
SURFACE FINISH		1.6 $\sqrt{\text{ }}$	
SURFACE TREATMENT		PASSIVATE	
MASS			
APPROVALS		DATE	
DRAWN K. KROMER		12/12/97	
CHECKED			
ISSUED			
<i>Space Sciences Laboratory</i> UNIVERSITY OF CALIFORNIA, BERKELEY, USA			
DWG TITLE		SHIM FUV WIC TAPER SUPPORT MOUNT	
SIZE	PROGRAM	DWG. NO.	REV
B	IMAGE	8232-A4	A
SCALE FULL		SHEET 1 OF 1	

4

3

2

1