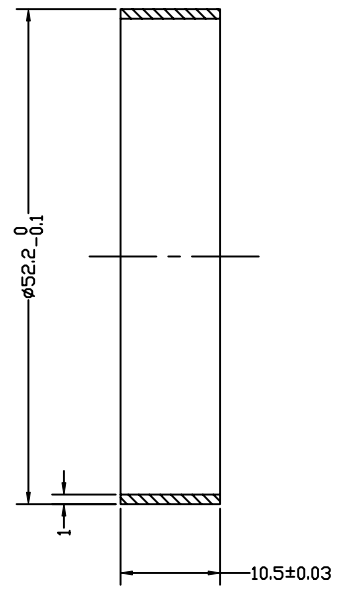
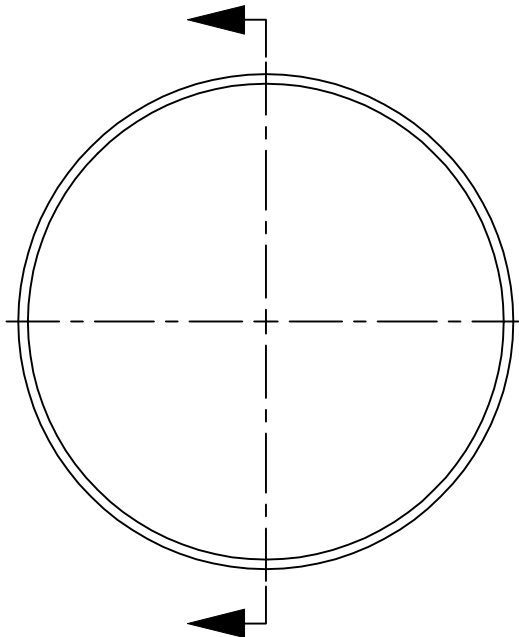
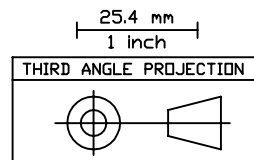


REVISIONS			
REV.	DESCRIPTION	DATE	APPROVED
A	BASELINE RELEASE	11/21/97	



NOTES, UNLESS SPECIFIED OTHERWISE:

1. REMOVE BURRS & BREAK SHARP EDGES
2. IDENTIFY PART BY BAGGING AND TAGGING
3. MATERIAL CERTS REQUIRED



1	A/R	ALUMINUM ALLOY, 6061-T6	QQ-A-250/11
ITEM#	QTY	PART NUMBER	NOMENCLATURE
TOLERANCES (EXCEPT AS SPECIFIED)		DO NOT SCALE DRAWING	
OVER	TD	METRIC DRAWING (UNITS: mm)	
0	49.99	INTERPRET PER ANSI Y14.5-1994 WELDING SYMBOLS PER ANSI/AWS A2.4-79	
50	249.9		
250	-		
ANGLES		DWG TITLE MIDDLE CCD SHIELD FUV WIC	
SURFACE FINISH 1.6 ✓		APPROVALS	DATE
SURFACE TREATMENT ALDINE 600 PER MIL-C-5541, CLASS 3		DRAWN K. KROMER	11/21/97
MASS 4.7g		CHECKED	
		ISSUED	
SIZE	PROGRAM	DWG. NO.	REV
B	IMAGE	8215-A4	A
SCALE	2:1	SHEET	1 OF 1

Space Sciences Laboratory
UNIVERSITY OF CALIFORNIA, BERKELEY, USA