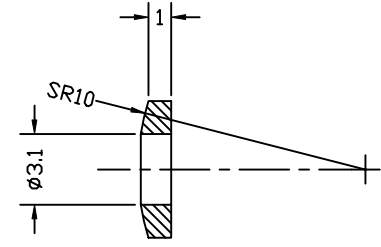
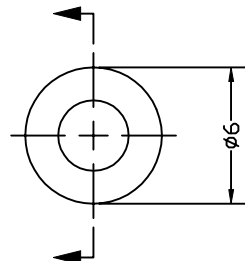
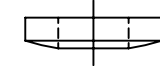
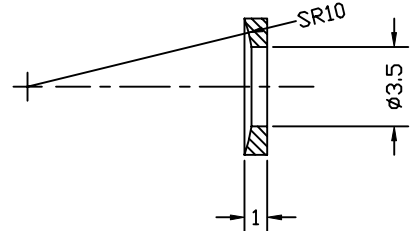
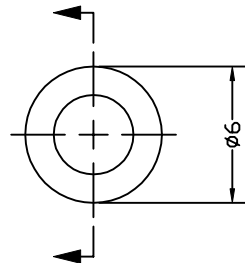


25.4 mm
1 inch

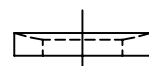
REVISIONS			
REV.	DESCRIPTION	DATE	APPROVED
A	BASELINE RELEASE	10/30/97	



PART -01



PART -02



1	A/R		302 STAINLESS STEEL	QQ-S-763
ITEM#	QTY	PART NUMBER	NOMENCLATURE	MATERIAL SPECIFICATION
TOLERANCES (EXCEPT AS SPECIFIED)			DO NOT SCALE DRAWING METRIC DRAWING (UNITS: mm)	
OVER	TO	TOLERANCE	<i>Space Sciences Laboratory</i> UNIVERSITY OF CALIFORNIA, BERKELEY, USA	
0	49.99	±0.1		
50	249.9	±0.5	DWG TITLE SWIVEL WASHERS FUV WIC DETECTOR MOUNT	
250	-	±1		
ANGLES		±1°	APPROVALS	DATE
SURFACE FINISH		0.8	DRAWN K. KROMER	10/30/97
SURFACE TREATMENT		NONE	CHECKED	
MASS		0.3g	ISSUED	
SIZE	PROGRAM	DWG. NO.	REV	
A	IMAGE	8171-A4	A	
SCALE 4:1			SHEET 1 OF 1	