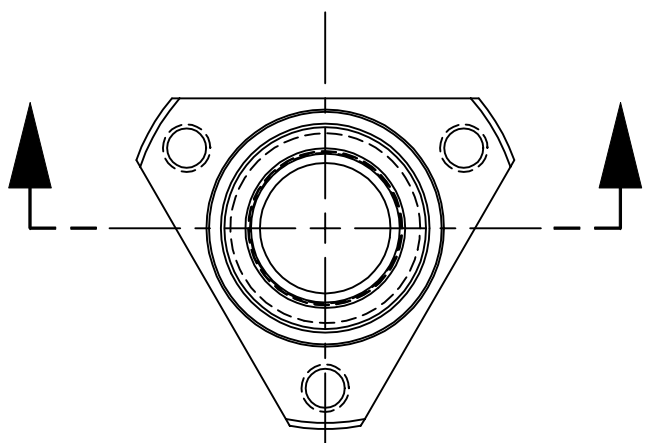
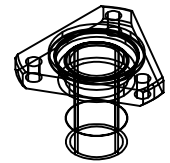
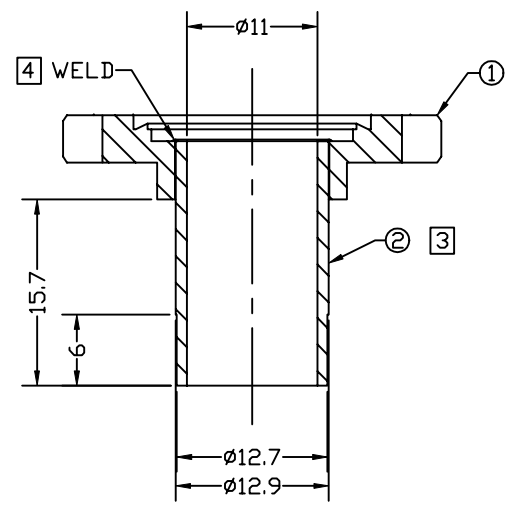


25.4 mm  
1 inch

REVISIONS			
REV.	DESCRIPTION	DATE	APPROVED
A	BASELINE RELEASE	2/11/98	



**NOTES, UNLESS SPECIFIED OTHERWISE:**  
 1. REMOVE BURRS & BREAK SHARP EDGES, R0.15 MAX  
 2. IDENTIFY PART BY BAGGING AND TAGGING  
 3. MANUFACTURE ITEM #2 AS SHOWN TO PROVIDE SLIP OR LIGHT PRESS FIT INTO ITEM #1. OPPOSITE END TO PROVIDE SLIP OR LOOSE PRESS FIT INTO UCB PN 8037 (FUV SI DETECTOR BACKPLATE). OD DIMENSIONS MAY BE MODIFIED ±0.3 AS REQUIRED.  
 4. TIG WELD ITEMS TOGETHER. WELD TO BE VACUUM LEAK TIGHT TO 1E-7 cc/sec IN He. NO DISCOLORATION ALLOWED.



2	1		PORT TUBE	304 SS
1	1	8144	MODIFIED CONFLAT	304 SS
ITEM#	QTY	PART NUMBER	NOMENCLATURE	MATERIAL SPECIFICATION

<b>TOLERANCES (EXCEPT AS SPECIFIED)</b> <table border="1"> <thead> <tr> <th>OVER</th> <th>TO</th> <th>TOLERANCE</th> </tr> </thead> <tbody> <tr> <td>0</td> <td>49.99</td> <td>±0.1</td> </tr> <tr> <td>50</td> <td>249.9</td> <td>±0.5</td> </tr> <tr> <td>250</td> <td>-</td> <td>±1</td> </tr> <tr> <td colspan="2">ANGLES</td> <td>±1°</td> </tr> </tbody> </table>			OVER	TO	TOLERANCE	0	49.99	±0.1	50	249.9	±0.5	250	-	±1	ANGLES		±1°	DO NOT SCALE DRAWING METRIC DRAWING (UNITS: mm)		<i>Space Sciences Laboratory</i> UNIVERSITY OF CALIFORNIA, BERKELEY, USA DWG TITLE <b>PUMP PORT            FUV SI DETECTOR</b>		
OVER	TO	TOLERANCE																				
0	49.99	±0.1																				
50	249.9	±0.5																				
250	-	±1																				
ANGLES		±1°																				
SURFACE FINISH 1.6 ✓			INTERPRET PER ANSI Y14.5-1994 WELDING SYMBOLS PER ANSI/AWS A24-79		APPROVALS DATE																	
SURFACE TREATMENT NONE			DRAWN K. KROMER 2/11/98		SIZE <b>A</b>	PROGRAM IMAGE	DWG. NO. 8156-A4	REV A														
MASS 19g			CHECKED		SCALE 2:1		SHEET 1 OF 1															
			ISSUED																			