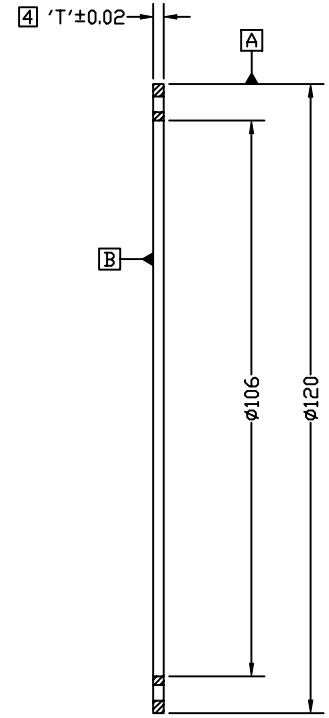
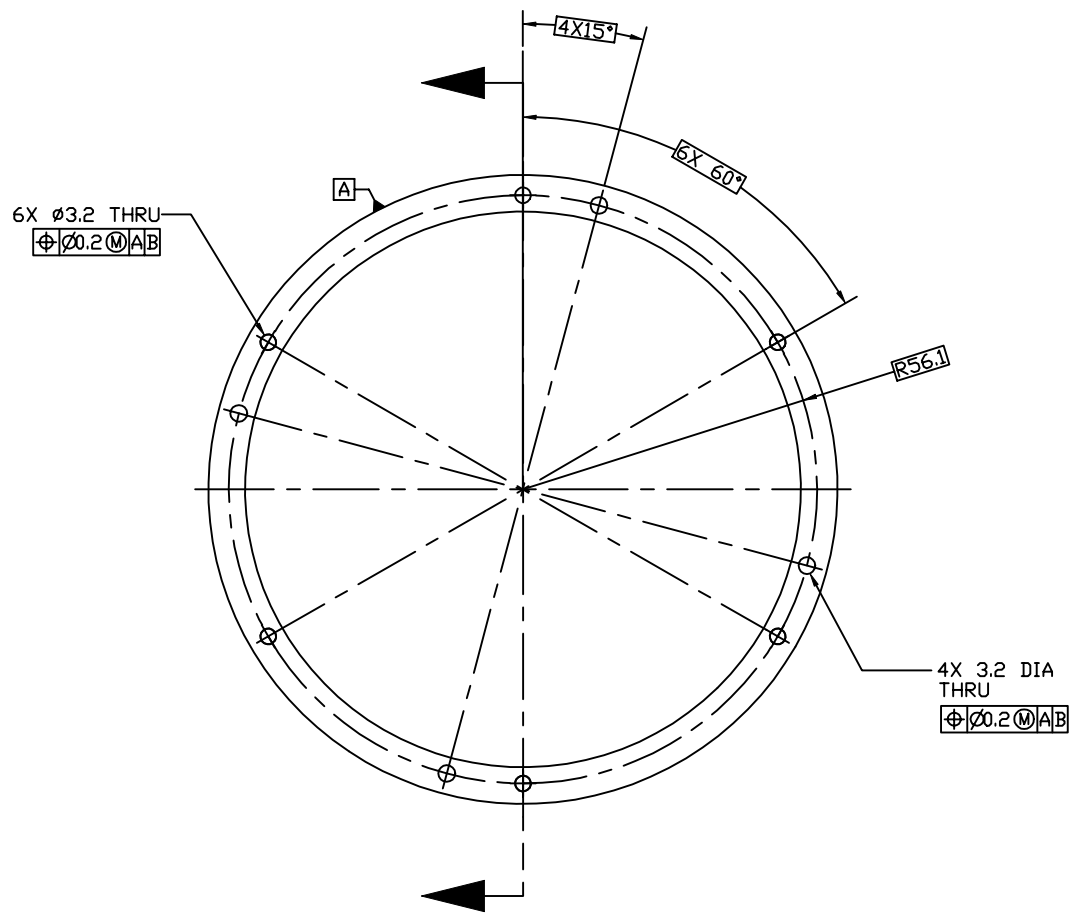
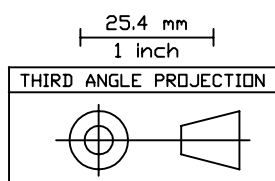


REVISIONS			
REV.	DESCRIPTION	DATE	APPROVED
A	BASELINE RELEASE	12/11/97	
B	ADDED 4 MISSING HOLES	11SEP98	HDH



**NOTES, UNLESS SPECIFIED OTHERWISE:**  
 1. REMOVE BURRS & BREAK SHARP EDGES  
 2. IDENTIFY PART BY BAGGING AND TAGGING  
 3. MATERIAL CERTS REQUIRED  
 4. THICKNESS 'T' IS DASH NO. OF PART IN TENTHS OF A mm, TO BE SPECIFIED AS REQUIRED. (FOR 8153-25, 'T'=2.5mm)



1	A/R	303 STAINLESS STEEL	QQ-S-763
ITEM#	QTY	PART NUMBER	NOMENCLATURE
TOLERANCES (EXCEPT AS SPECIFIED)		DO NOT SCALE DRAWING	
OVER	TO	METRIC DRAWING (UNITS: mm)	
0	49.99	INTERPRET PER ANSI Y14.5-1994	
50	249.9	WELDING SYMBOLS PER ANSI/AWS A2.4-79	
250		APPROVALS	
ANGLES		DATE	
-		12/11/97	
SURFACE FINISH 0.8		DRAWN K. KROMER	
SURFACE TREATMENT PASSIVATE		CHECKED	
MASS		ISSUED	
		DWG TITLE	
		SHIM	
		FUV WIC DETECTOR MOUNT	
SIZE B	PROGRAM IMAGE	DWG. NO. 8153-A4	REV B
SCALE FULL	SHEET 1 OF 1		