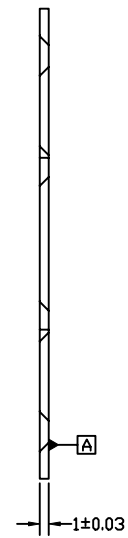
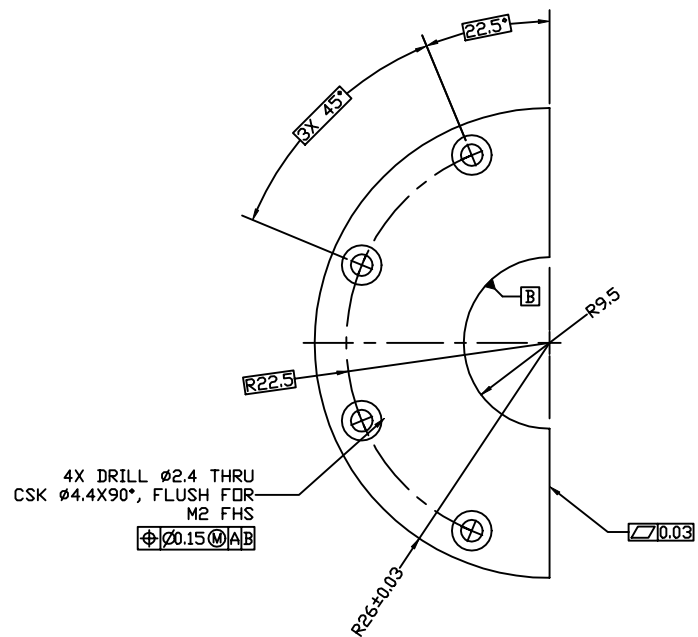
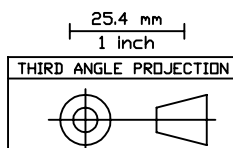


| REVISIONS | | | |
|-----------|--|--------|----------|
| REV. | DESCRIPTION | DATE | APPROVED |
| B | CHANGED INNER RADIUS FROM 8.5 TO 9.5, MOVED HOLE PATTERN FROM R18 TO R22.5 | 2/3/98 | |



- NOTES, UNLESS SPECIFIED OTHERWISE:
1. REMOVE BURRS & BREAK SHARP EDGES
 2. IDENTIFY PART BY BAGGING AND TAGGING
 3. MATERIAL CERTS REQUIRED



| | | | |
|----------------------------------|-------|--------------------------------------|------------------|
| 1 | A/R | ALUMINUM ALLOY, 6061-T6 | QQ-A-250/11 |
| ITEM# | QTY | PART NUMBER | NOMENCLATURE |
| TOLERANCES (EXCEPT AS SPECIFIED) | | DO NOT SCALE DRAWING | |
| OVER | TO | METRIC DRAWING | |
| 0 | 49.99 | (UNITS: mm) | |
| 50 | 249.9 | INTERPRET PER ANSI Y14.5-1994 | |
| 250 | - | WELDING SYMBOLS PER ANSI/AWS A2.4-79 | |
| ANGLES | | APPROVALS | DATE |
| | | DRAWN K. KROMER | 2/3/98 |
| SURFACE FINISH 1.6 | | CHECKED | |
| SURFACE TREATMENT | | ISSUED | |
| GOLD ALODINE 600 PER | | SIZE B | PROGRAM IMAGE |
| MIL-C-5541, CLASS 3 | | SCALE 2:1 | DWG. NO. 8146-A4 |
| MASS 2.3g | | REV B | |
| | | SHEET 1 OF 1 | |

Space Sciences Laboratory
UNIVERSITY OF CALIFORNIA, BERKELEY, USA

DWG TITLE
MID CCD SHIELD PLATE
FUV WIC