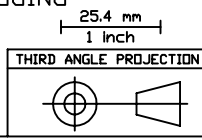


REVISIONS			
REV.	DESCRIPTION	DATE	APPROVED
D	REMOVED EARS & M3 TAPPED HOLES, ADDED 1X45° CHAM, CHANGED OD OF 60° GROOVE	3/10/98	

- NOTES, UNLESS SPECIFIED OTHERWISE:
 1. REMOVE BURRS & BREAK SHARP EDGES
 2. IDENTIFY PART BY BAGGING AND TAGGING
 3. MATERIAL CERTS REQUIRED



1	A/R	TANTALUM	
ITEM#	QTY	PART NUMBER	NOMENCLATURE
TOLERANCES (EXCEPT AS SPECIFIED)		DO NOT SCALE DRAWING	
DIMEN	TO	METRIC DRAWING	
0	49.99	(UNITS: mm)	
20	249.9	INTERPRET PER ANST Y14.5-1994	
ANGLES	-	VELDING SYMBOLS PER ANSI/ASME A2.4-79	
		APPROVALS	DATE
SURFACE FINISH	1.6	DRAWN	K. KROMER
SURFACE TREATMENT	NONE	CHECKED	11/14/97
ISSUED		ISSUED	
MASS	76.5g	SCALE	2:1

Space Sciences Laboratory
 UNIVERSITY OF CALIFORNIA, BERKELEY, USA

DWG TITLE
 INNER TAPER SUPPORT
 FUV WIC

SIZE B PROGRAM IMAGE DWG. NO. 8145-A4 REV D SHEET 1 OF 1