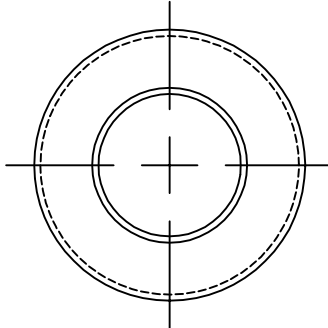
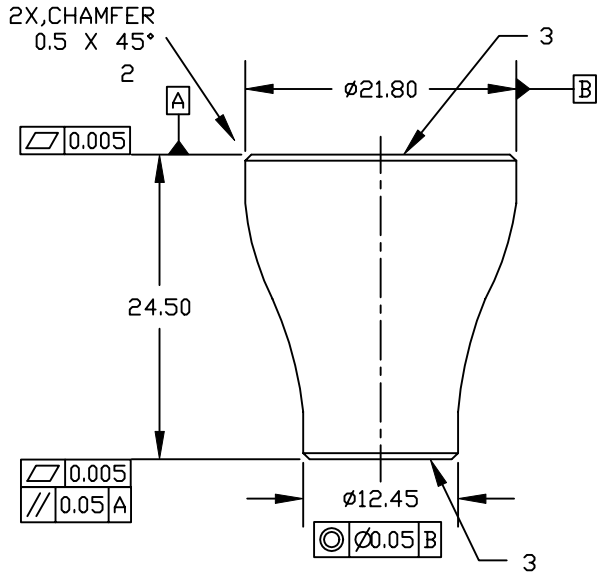


REVISIONS			
REV.	DESCRIPTION	DATE	APPROVED
A	BASELINE RELEASE	7/10/97	S.M.

NOTES:

1. MATERIAL CERTIFICATION REQ'D.
2. CHAMFER TO PREVENT CHIPPING. POLISH TO REMOVE SHARP EDGES.
3. OPTICAL POLISH. SCRATCH/DIG 20/10 PER MIL-Q-13830.
4. RATIO: 1.75; REF.: WORKING AREA: INPUT $\varnothing 14.75$, OUTPUT $\varnothing 8.43$
5. MAT'L: 4-8 MICRON, EMA, NA 1.0 SEE PURCHASE ORDER FOR ANY ADDL. INSTRUCTIONS ON FIBER SIZE. INPUT $\varnothing 14.75$, OUTPUT $\varnothing 8.43$
6. BLEMISH/CHICKENWIRE: CCD QUALITY



25 mm

1			FIBER OPTIC TAPER	SEE NOTE 5
ITEM#	QTY	PART NUMBER	NOMENCLATURE	MATERIAL SPECIFICATION

THIRD ANGLE PROJECTION

OVER	TO	TOLERANCE
0	49.99	± 0.1
50	249.9	± 0.5
250	-	± 1
ANGLES		TOLERANCE
		$\pm 0.1^\circ$

NEXT	FINAL	NEXT ASSY	USED ON
QTY REQD PER ASSY	APPLICATION	MASS	

TOLERANCES (EXCEPT AS SPECIFIED)		DO NOT SCALE DRAWING METRIC DRAWING (UNITS: mm)	
SURFACE FINISH		INTERPRET PER ANSI Y14.5-1982 WELDING SYMBOLS PER ANSI/AWS A2.4-79	
SURFACE TREATMENT		APPROVALS	DATE
		DRAWN J. STOCK	6/27/97
		CHECKED S.M.	7/8/97
		ISSUED J. STOCK	7/10/97

<i>Experimental Astrophysics Group</i> UNIVERSITY OF CALIFORNIA, BERKELEY, USA			
DWG TITLE FIBER OPTIC TAPER WIC DETECTOR			
SIZE A	PROGRAM IMAGE	DWG. NO. (PREV. 8570) 8084-A3	REV A
SCALE 2/1		SHEET 1 OF 1	