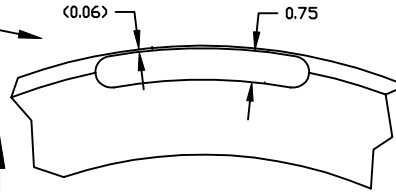
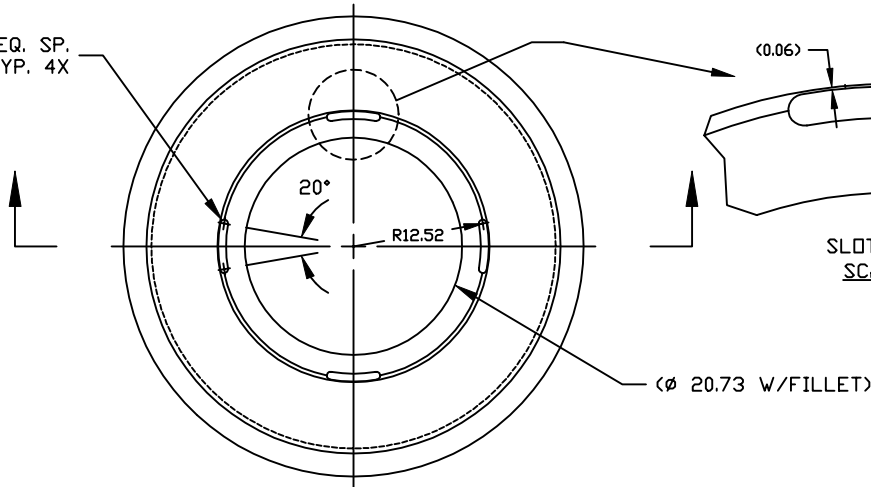


VENT SLOTS, 4X EQ. SP.
DIMS TYP. 4X

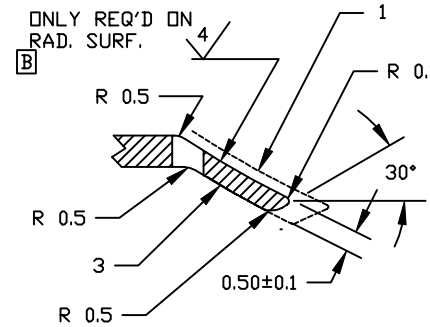
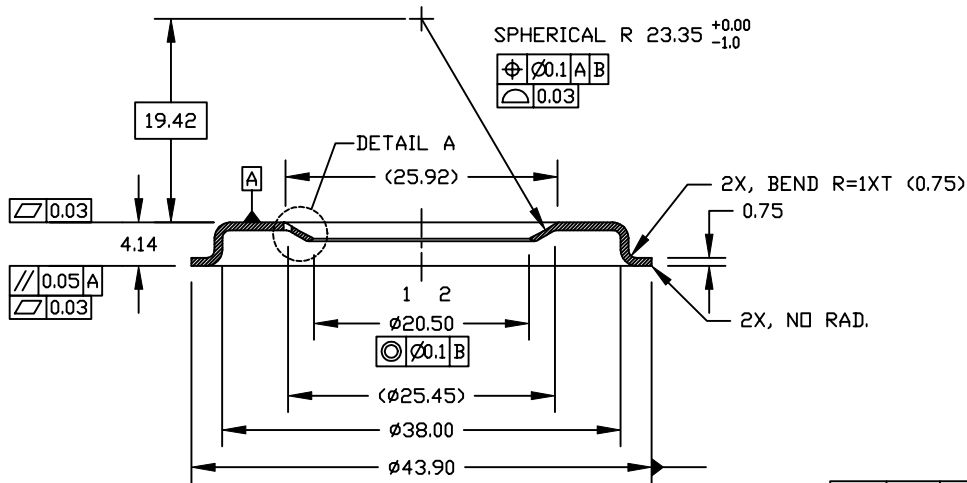


SLOT DETAIL
SCALE 8X

REVISIONS			
REV.	DESCRIPTION	DATE	APPROVED
A	BASELINE RELEASE	7/10/97	D.S.
B	ADD VENT SLOTS	8/21/97	J.S.

NOTES (UNLESS OTHERWISE SPECIFIED):

- DIMENSIONS REFER TO COMPLETED ASSEMBLY. FABRICATE PART WITH SURPLUS MATERIAL WHERE NECESSARY IF FINAL MACHINING IS TO FOLLOW BRAZING PROCESS. MINIMUM: LEAVE PART I.D. SMALL, MAT'L ON CURVE SURF.
- I.D. DIM. APPLIES TO MACHINED PART BEFORE FILLET. SLIGHT DIA. INCREASE AFTER FILLET O.K.
- PROFILE NOT CRITICAL. VENDOR HAS OPTION TO MAKE FLAT OR APPLY CURVE (R 23.85).
- USE NO SULPHUR OILS.
- MATERIAL CERT'S REQUIRED.



DETAIL A
SCALE 8X

1				KOVAR MIL-I-230-1
ITEM#	QTY	PART NUMBER	NOMENCLATURE	MATERIAL SPECIFICATION
TOLERANCES (EXCEPT AS SPECIFIED) OVER TO TOLERANCE 0 49.99 ± 0.1 50 249.9 ± 0.5 250 - ± 1 ANGLES $\pm 0.1^\circ$				DO NOT SCALE DRAWING METRIC DRAWING (UNITS: mm) INTERPRET PER ANSI Y14.5-1982 WELDING SYMBOLS PER ANSI/AWS A2.4-79
SURFACE FINISH 32				
SURFACE TREATMENT ELECTROPOLISH				DWG TITLE MCP OUTPUT FLANGE WIC DETECTOR BRAZED ASSY
APPROVALS DRAWN J. STOCK 6/27/97 CHECKED D.S. 7/2/97 ISSUED J. STOCK 7/10/97				DWG. NO. (PREV. 8559) 8081-A3
THIRD ANGLE PROJECTION 				SIZE B PROGRAM IMAGE SCALE 2/1
NEXT FINAL NEXT ASSY USED ON QTY REQD PER ASSY APPLICATION				SHEET 1 OF 1