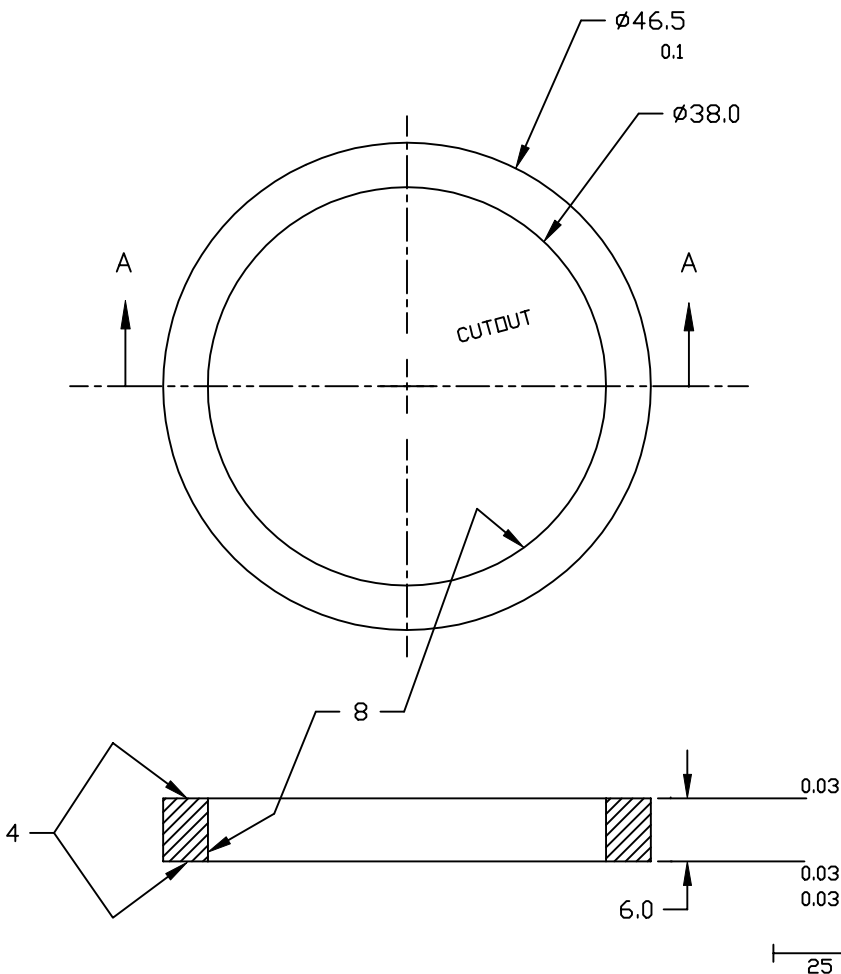


REVISIONS			
REV.	DESCRIPTION	DATE	APPROVED
-	BASELINE RELEASE		
A	CREATE NEW DWG. NUM. FROM OLD DWG., NO DESIGN CHANGE	3/25/97	D. SIEGMUND



NOTES (UNLESS OTHERWISE SPECIFIED):

1. INTERPRET DRAWING PER ANSIIY14.5M - 1982.
2. SURFACE TEXTURE PER ANSI B46.1 - 1978. MICROMETERS - μm
3. DO NOT SCALE DRAWING. DRAWING MAY BE REPRODUCED.
4. METALLIZE INDICATED SURFACES WITH 13 MICRONS MoMn AND 2.5 MICRONS Ni.
5. CHAMFER OR RADIUS EDGES 0.25.
6. LAPP OR FINE GRIND SURFACE FINISH TO 0.8 MICRONS.
7. DIMENSIONS APPLY AFTER METALIZATION.
8. INTERNAL SURFACE TO BE COATED WITH $\text{Cr}_2\text{O}_3(\text{Ti})$ "TICHROME" PRECISION COATING AFTER METALIZATION (NOTE 4) IS COMPLETE. NO SUBSTRATE IS TO BE VISIBLE INTERNALLY. COATING RESISTANCE TO BE $2 \times 10^8 - 1 \times 10^9 \Omega\text{HMS}$ BETWEEN CYLINDER ENDS MEASURED IN VACUUM (1×10^{-6} TORR). RESISTANCE COATING TO MAKE FULL CONTACT WITH METALIZED SURFACE AROUND ENTIRE CIRCUMFERENCE.
9. CERAMIC TO BE FREE OF METAL MARKS AND OTHER CONTAMINATION PRIOR TO BRAZING.

SECTION A-A

NEXT	FINAL	NEXT ASSY	USED ON
QTY	REQD		
PER	ASSY	APPLICATION	

1			96-98% ALUMINA																
ITEM#	QTY	PART NUMBER	NOMENCLATURE	MATERIAL SPECIFICATION															
TOLERANCES (EXCEPT AS SPECIFIED)		DO NOT SCALE DRAWING																	
OVER	TO	METRIC DRAWING																	
0	49.99	(UNITS: mm)																	
50	249.9	INTERPRET PER ANSI Y14.5-1982																	
250	-	WELDING SYMBOLS PER ANSI/AWS A2.4-79																	
ANGLES		APPROVALS																	
		DATE																	
SURFACE FINISH		DRAWN J. STOCK 3/21/97																	
0.8		CHECKED D. SIEGMUND 3/21/97																	
SURFACE TREATMENT		ISSUED J. STOCK 3/25/97																	
SURFACE TREATMENT		MASS																	
<table border="1"> <tr> <td>SIZE</td> <td>PROGRAM</td> <td>DWG. NO.</td> <td>REV</td> </tr> <tr> <td>B</td> <td>IMAGE</td> <td>(PREV. 00416) 8066-A3</td> <td>A</td> </tr> </table>					SIZE	PROGRAM	DWG. NO.	REV	B	IMAGE	(PREV. 00416) 8066-A3	A							
SIZE	PROGRAM	DWG. NO.	REV																
B	IMAGE	(PREV. 00416) 8066-A3	A																
<table border="1"> <tr> <td colspan="2">DWG TITLE</td> <td colspan="3">SHEET 1 OF 1</td> </tr> <tr> <td colspan="2">EXPERIMENTAL ASTROPHYSICS GROUP</td> <td colspan="3">UNIVERSITY OF CALIFORNIA, BERKELEY, USA</td> </tr> <tr> <td colspan="2">CERAMIC SPACER RING (COATED)</td> <td colspan="3">SI DETECTOR</td> </tr> </table>					DWG TITLE		SHEET 1 OF 1			EXPERIMENTAL ASTROPHYSICS GROUP		UNIVERSITY OF CALIFORNIA, BERKELEY, USA			CERAMIC SPACER RING (COATED)		SI DETECTOR		
DWG TITLE		SHEET 1 OF 1																	
EXPERIMENTAL ASTROPHYSICS GROUP		UNIVERSITY OF CALIFORNIA, BERKELEY, USA																	
CERAMIC SPACER RING (COATED)		SI DETECTOR																	
SCALE 2/1																			