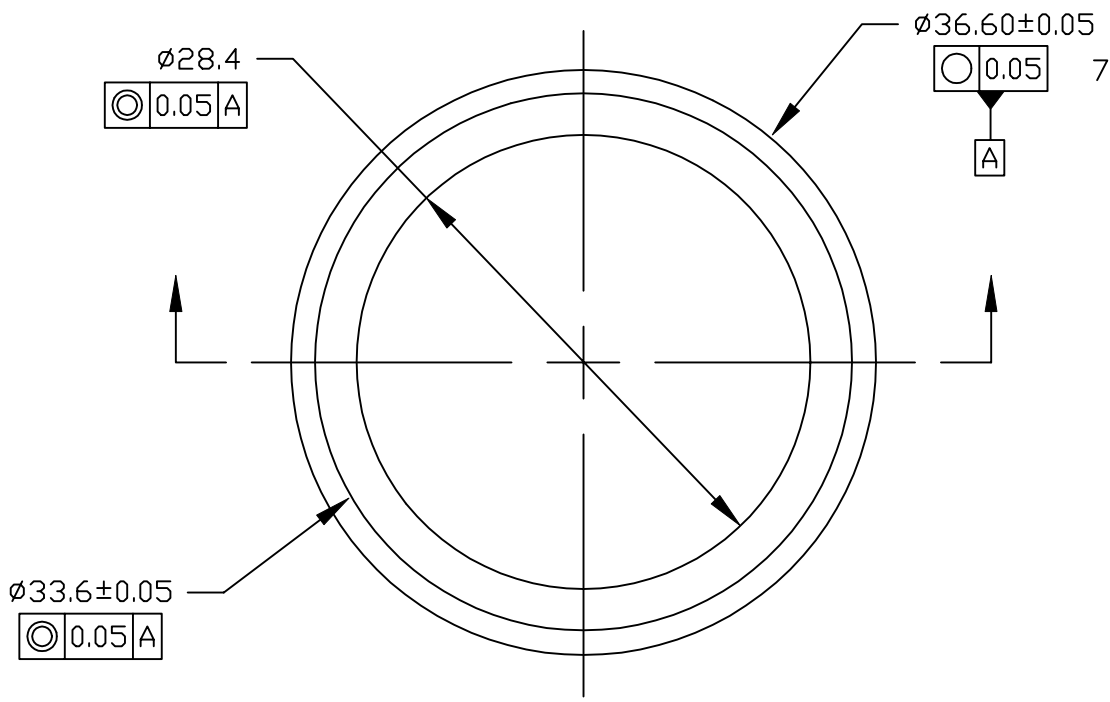
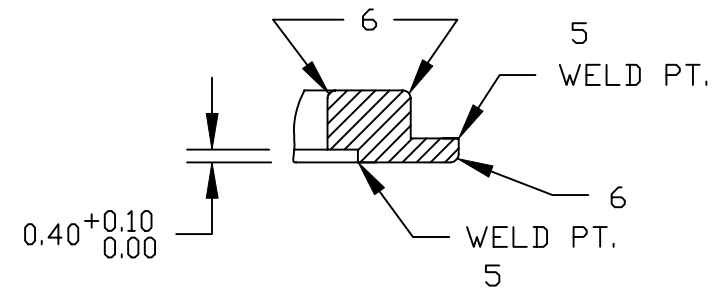
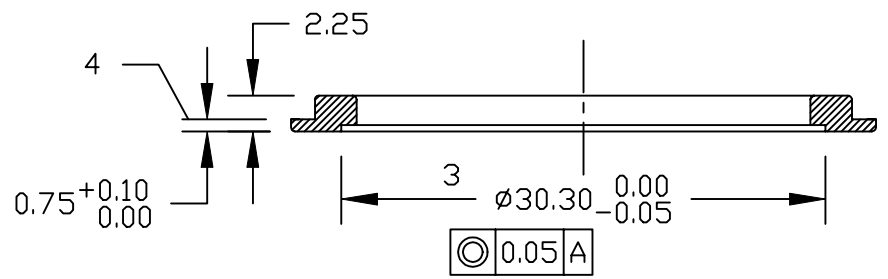


REVISIONS			
REV.	DESCRIPTION	DATE	APPROVED
A	BASELINE RELEASE	9/26/97	D.S.
B	REM. WELD GR., VENT SLOT	12/3/97	



NOTES:

1. MATERIAL CERT'S REQUIRED.
2. DO NOT USE SULFUR OILS.
3. REF.; SPECIFIC MATING FLANGE DIA. WILL NEED TO BE REDUCED TO FIT FOR WELD. MATING FLANGE DIA'S VARY SLIGHTLY.
4. NOMINAL DESIGN THICKNESS 0.4mm. 0.35mm MAT'L ADDED; EXPECT FINAL CUT OF THIS SURF. FOLLOWING MEASUREMENTS OF ASSEMBLED PARTS.
5. REF.; SUBASSY DWG. 8134-A3
6. FILLET R 0.25.
7. REF.; SPECIFIC MATING FLANGE DIA. WILL NEED TO BE REDUCED TO MATCH THIS DIA. MATING FLANGE DIA'S VARY SLIGHTLY.
8. DEBURR. BREAK SHARP EDGES R0.1 EXCEPT WHERE NOTED AND WELD PTS.



25 mm

1						304 SS	
ITEM#	QTY	PART NUMBER		NOMENCLATURE		MATERIAL SPECIFICATION	
THIRD ANGLE PROJECTION		TOLERANCES (EXCEPT AS SPECIFIED)		DO NOT SCALE DRAWING METRIC DRAWING (UNITS: mm)		<i>Experimental Astrophysics Group</i> UNIVERSITY OF CALIFORNIA, BERKELEY, USA DWG TITLE DET. BODY TO F.O. I/F RING WIC DETECTOR	
		OVER	TO	TOLERANCE	INTERPRET PER ANSI Y14.5-1982 WELDING SYMBOLS PER ANSI/AWS A2.4-79		
		0	49.99	±0.1	APPROVALS	DATE	DWG. NO. 8063-A3 REV B
		50	249.9	±0.5	DRAWN J. STOCK	9/19/97	
		250	-	±1	CHECKED D.S.	9/23/97	SCALE 2/1 SHEET 1 OF 1
				±0.1*	ISSUED J.S.	9/26/97	
SURFACE FINISH		0.8		SURFACE TREATMENT			
SURFACE TREATMENT		ELECTROPOLISH		MASS			
NEXT	FINAL	NEXT ASSY	USED ON	APPLICATION			
QTY REQD PER ASSY							