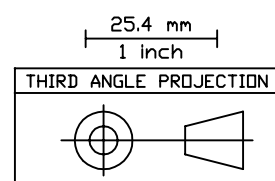
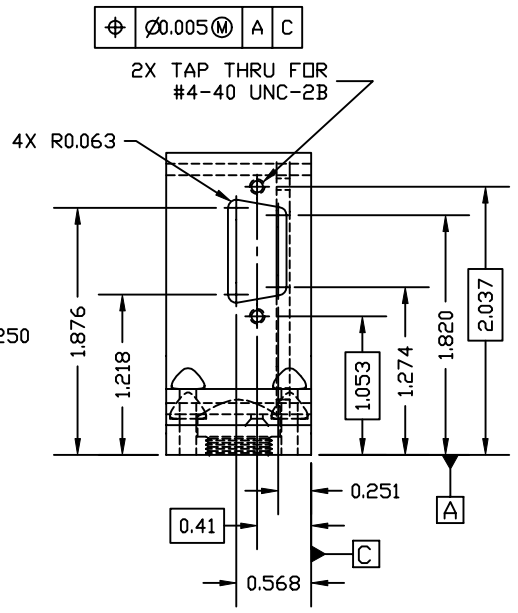
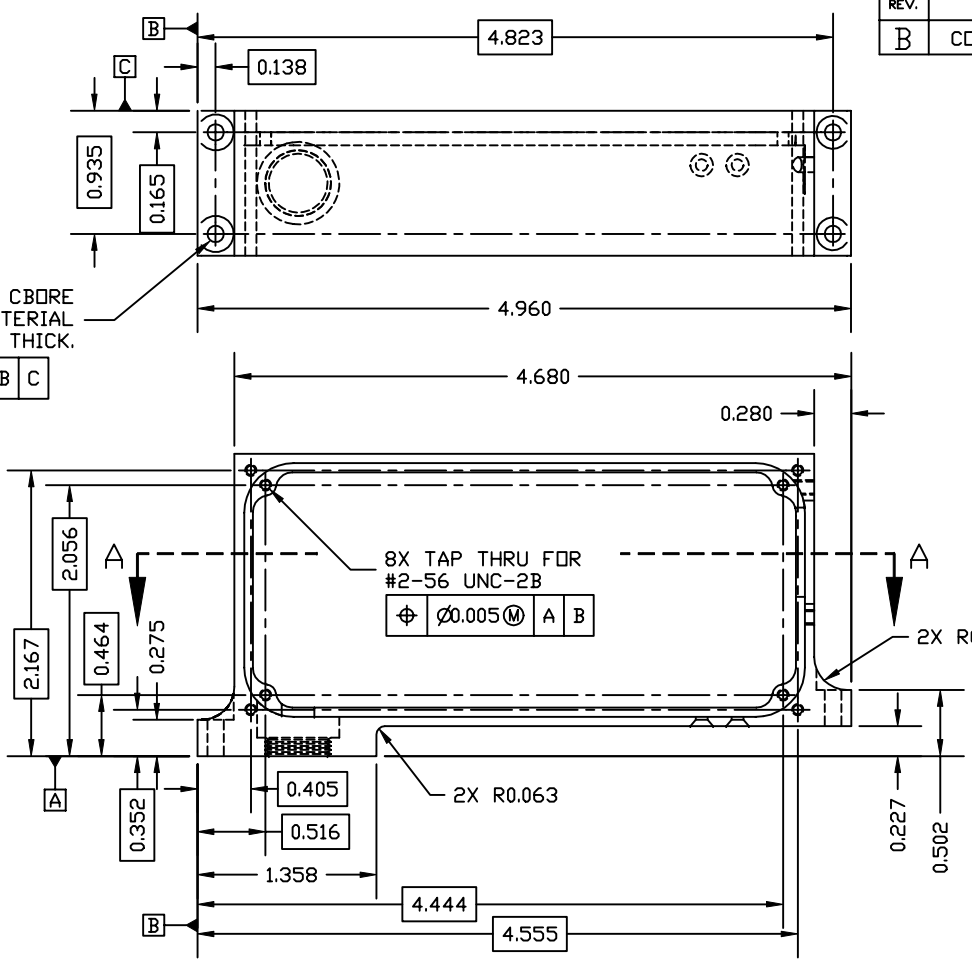
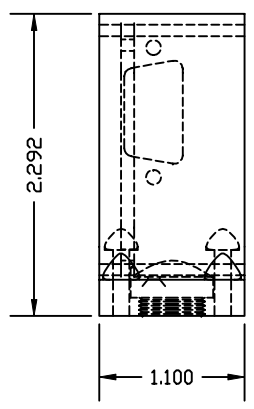


REVISIONS			
REV.	DESCRIPTION	DATE	APPROVED
B	CORRECTED .495 DIM TO .516	10/14/97	

4X DRILL $\phi 0.125$ THRU, CBDR
 $\phi 0.276$ UNTIL REMAINING MATERIAL
 IS 0.276 THICK.

ϕ	$\phi 0.005$	M	A	B	C
--------	--------------	---	---	---	---



1	A/R	ALUMINUM ALLOY, 6061 T-651	QQ-A-250/12										
ITEM#	QTY	PART NUMBER	NOMENCLATURE										
TOLERANCES (EXCEPT AS SPECIFIED)		DO NOT SCALE DRAWING ENGLISH DRAWING (UNITS: inches)											
OVER	TO	INTERPRET PER ANSI Y14.5-1994 WELDING SYMBOLS PER ANSI/AWS A2.4-79											
0	1.999	<table border="1"> <tr> <td>TOLERANCE</td> <td></td> </tr> <tr> <td>± 0.004</td> <td></td> </tr> <tr> <td>± 0.02</td> <td></td> </tr> <tr> <td>± 0.04</td> <td></td> </tr> <tr> <td>$\pm 1^\circ$</td> <td></td> </tr> </table>		TOLERANCE		± 0.004		± 0.02		± 0.04		$\pm 1^\circ$	
TOLERANCE													
± 0.004													
± 0.02													
± 0.04													
$\pm 1^\circ$													
2	9.999												
10	-												
ANGLES		APPROVALS											
SURFACE FINISH 1.6		DATE											
SURFACE TREATMENT		DRAWN											
ALODINE 600 PER		K. KROMER	7/20/97										
MIL-C-5561		CHECKED											
MASS		ISSUED											
69.0g		DWG TITLE											
		ELECTRONICS BOX											
		WIC HVPS											
SIZE	PROGRAM	DWG. NO.	REV										
B	IMAGE	8055-A4	B										
SCALE FULL		SHEET 1 OF 2											

Space Sciences Laboratory
 UNIVERSITY OF CALIFORNIA, BERKELEY, USA