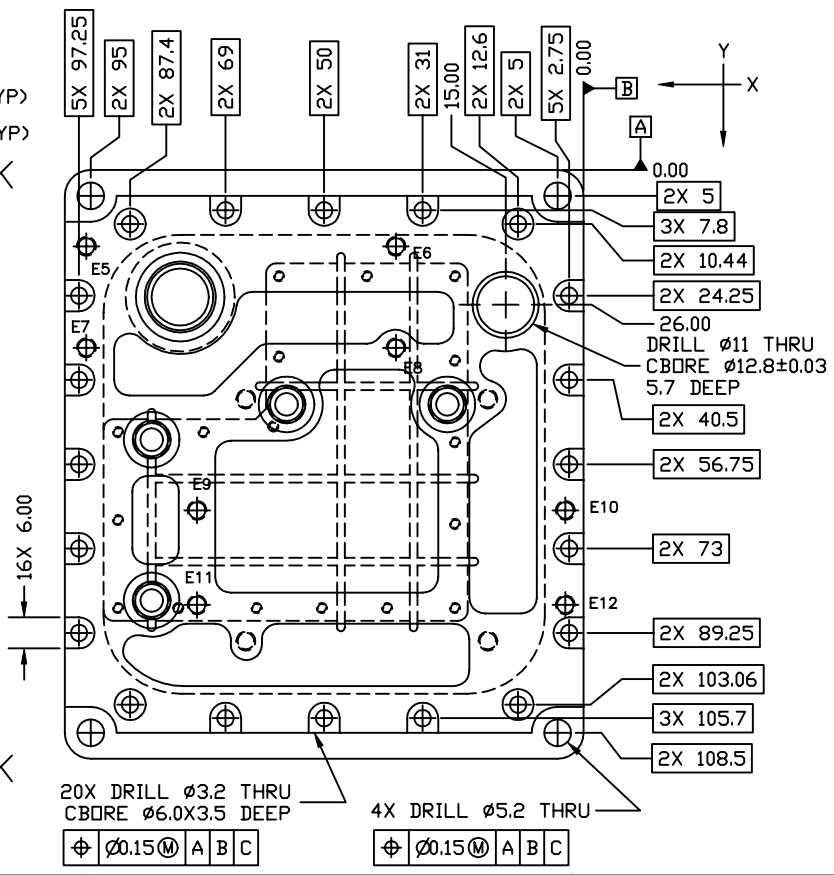
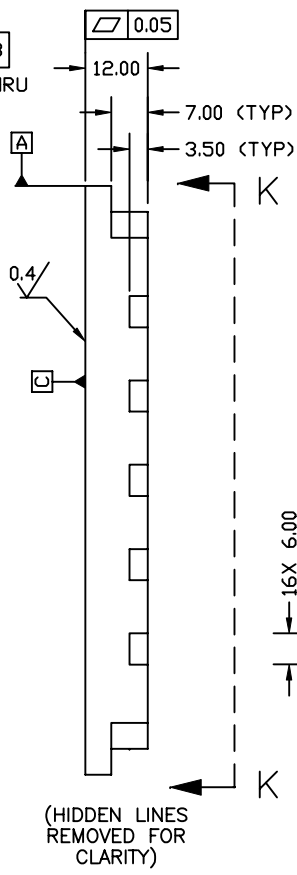
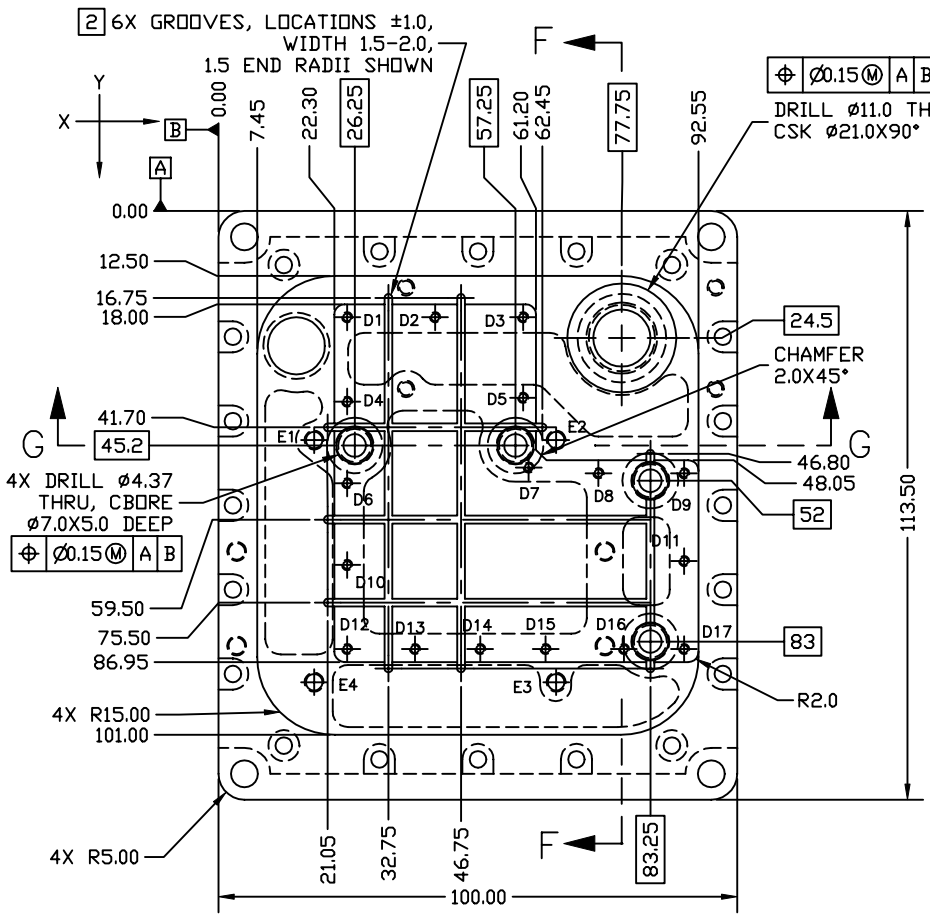
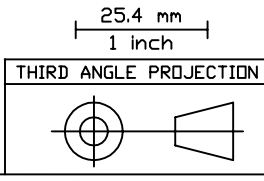


REVISIONS			
REV.	DESCRIPTION	DATE	APPROVED
E	MOVED Ø9.53 HOLE AND CHANGED TO Ø11 WITH Ø12.8 CBORE	8/16/97	



NOTES:
 1. REMOVE BURRS & BREAK SHARP EDGES
 2. GROOVES FOR VENTING PURPOSES OF LOWER RECESS WHEN ASSEMBLED WITH MATING PART. CROSS SECTION MAY BE RECTANGULAR (SHOWN) OR SEMI-CIRCULAR PROVIDING MAX DEPTH IS NOT EXCEEDED AND GROOVES DO NOT BREAK INTO ANY TAPPED HOLE



1	A/R		STAINLESS STEEL, TYPE 304	QQ-S-763
ITEM#	QTY	PART NUMBER	NOMENCLATURE	MATERIAL SPECIFICATION
TOLERANCES (EXCEPT AS SPECIFIED)		DO NOT SCALE DRAWING		
DYER	TO	TOLERANCE	METRIC DRAWING	
0	49.99	±0.1	(UNITS: mm)	
50	249.9	±0.5	INTERPRET PER ANSI Y14.5-1994	
250	-	±1	WELDING SYMBOLS PER ANSI/AWS A2.4-79	
ANGLES		-	APPROVALS	
SURFACE FINISH		1.6	DATE	
SURFACE TREATMENT		ELECTROPOLISH	DRAWN K. KROMER	4/15/97
MASS		542g	CHECKED	
			ISSUED	
DWG TITLE			SIZE	REV
Space Sciences Laboratory			B	E
UNIVERSITY OF CALIFORNIA, BERKELEY, USA			PROGRAM	DWG. NO.
BACKPLATE			IMAGE	8037-A4
FUV SI DETECTOR			SCALE	SHEET 1 OF 3
			FULL	