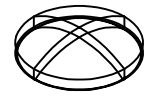
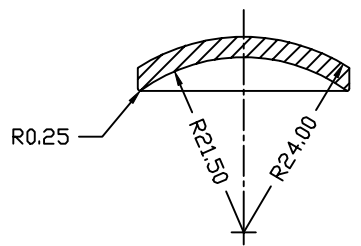
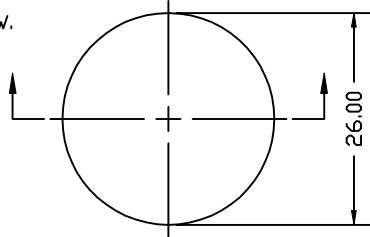


25.4 mm  
1 Inch

REVISIONS			
REV.	DESCRIPTION	DATE	APPROVED
A	BASELINE RELEASE	4/29/97	

- NOTES (UNLESS OTHERWISE SPECIFIED):
1. MATERIAL: BARIUM FLUORIDE, WITH NO BUBBLES, INCLUSIONS, OR SEEDS.
  2. FINISH: OPTICAL POLISH SPHERICAL SURFACES TO 20/10 SCRATCH DIG.
  3. MATERIAL CERTIFICATION REQUIRED
  4. ORIENT MATERIAL OPTICAL AXIS PERPENDICULAR TO CENTER OF WINDOW.



25.4 mm  
1 Inch

REVISIONS			
REV.	DESCRIPTION	DATE	APPROVED

1	A/R	BARIUM FLUORIDE (BaF2)	
ITEM#	QTY	PART NUMBER	MATERIAL SPECIFICATION
TOLERANCES (EXCEPT AS SPECIFIED)		DO NOT SCALE DRAWING	
OVER	TO	METRIC DRAWING	
0	49.99	±0.1	
50	249.9	±0.5	
250	ANGLES	±1°	
SURFACE FINISH		APPROVALS	
SEE NOTES ✓		DATE	
SURFACE TREATMENT		DRAWN K. KROMER 4/29/97	
NONE		CHECKED	
MASS		ISSUED	
UNIVERSITY OF CALIFORNIA, BERKELEY, USA		DWG TITLE	
Space Sciences Laboratory		SPHERICAL WINDOW	
UNIVERSITY OF CALIFORNIA, BERKELEY, USA		WIC DETECTOR	
SIZE	PROGRAM	DWG. NO.	REV
A	IMAGE	8035-A4	A
SCALE 2:1		SHEET 1 OF 1	

SIZE	PROGRAM	DWG. NO.	REV
A	IMAGE	8035-A4	A
SCALE		SHEET	