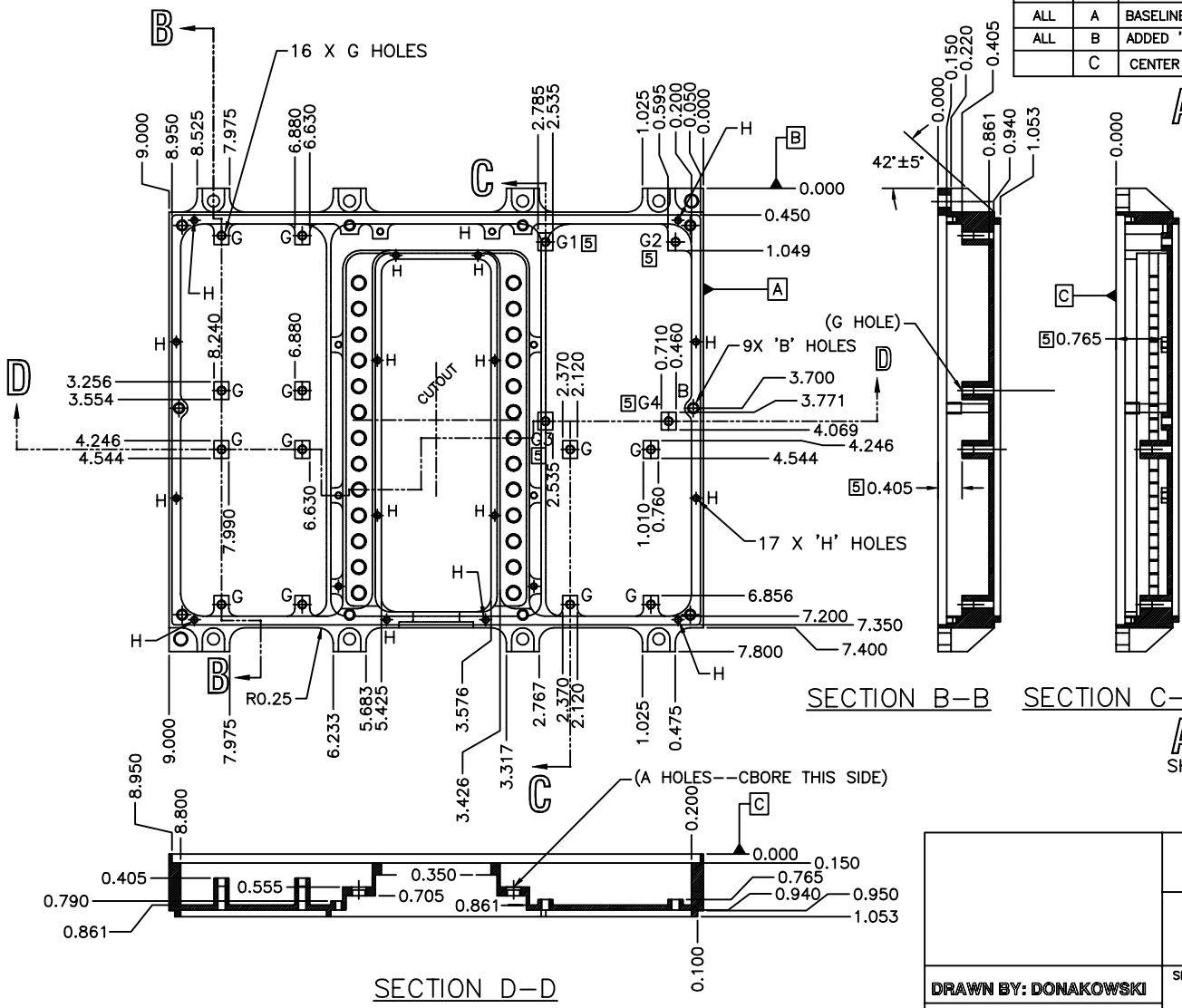


REVISIONS				
ZONE	REV	DESCRIPTION	DATE	APPROVED
ALL	A	BASELINE RELEASE	04-AUG-97	DONAKOWSKI
ALL	B	ADDED 'H' HOLES & CBORE TO 'A' HOLES	17-SEP-97	DONAKOWSKI
	C	CENTER 6 'H' HOLE LOCATIONS AS BUILT	9 OCT,1998	HDH



- NOTES: UNLESS OTHERWISE SPECIFIED
1. INTERPRET DWG PER ASME Y14.5M-1994
  2. REMOVE BURRS AND BREAK SHARP EDGES
  3. DWG NOT COMPLETELY DIMENSIONED. SEE .DXF FILE FOR COMPLETE PART GEOMETRY.
  4. SURFACE TREATMENT: ALODINE 600 PER MIL-C-5541 CL 3 (GOLD)
- [5] HOLES G1, G2, G3, & G4 ARE LOCATED ON BOSSES .765 FROM DATUM -C-. ALL OTHER G HOLES ARE ON BOSSES .405 FROM DATUM -C-.

SHEET 2

DRAWN BY: DONAKOWSKI		DATE: 13-AUG-97		MATERIAL: AL ALLOY 6061-T6 PER QQ-A-250/11		LVPS BOX FRAME, MEP	
SIZE	FSCM NO.	DWG NO.	8015-A4	REV	C	SCALE 1/2	
				SHEET 1 OF 2			