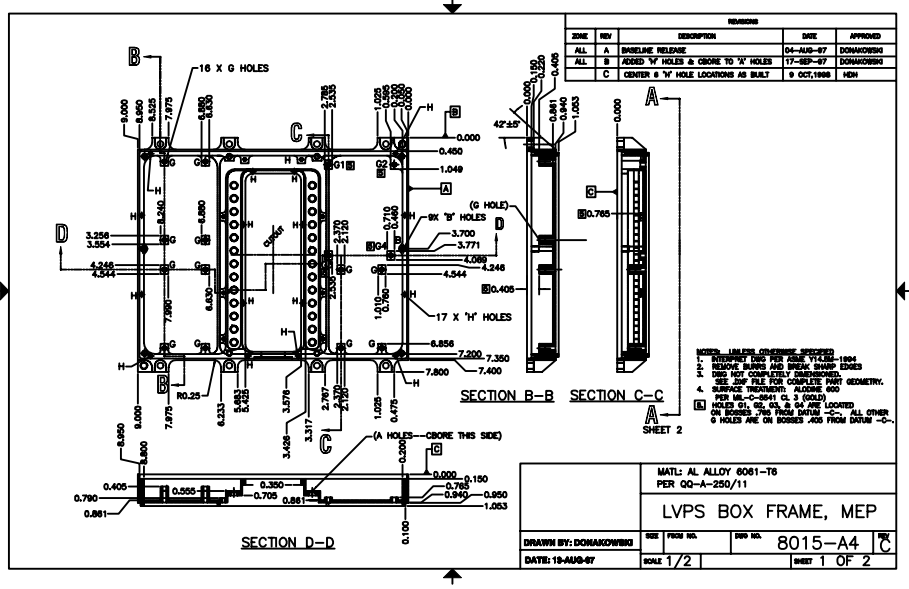


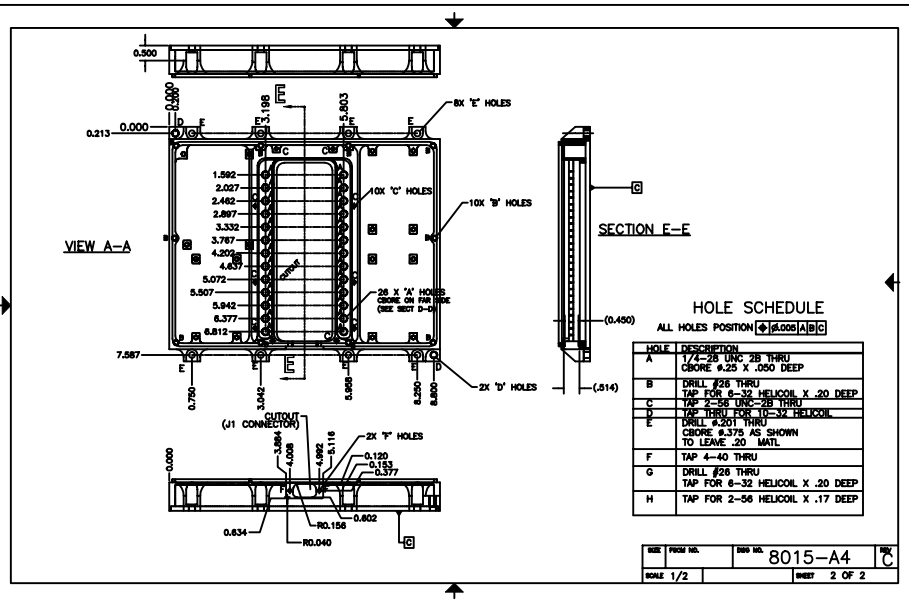
USER REVDATE FRAME



HOLE LOCATIONS CHANGED PER SPEC
 REQUIREMENT FOR THE DATE 11-24-1984
 REMOVE BURNS AND BREAK SHARP EDGES
 ALL DIMENSIONS TO CENTER UNLESS NOTED
 SEE DIM FILE FOR COMPLETE PART GEOMETRY.
 A SURFACE TREATMENT: ALUMINE 600
 PER MIL-C-8841 CL. 3 GOLD
 HOLE CL. DR. DIA. & ANGLE LOCATED
 ON BORDERS ARE FROM DIMEN -C-. ALL OTHER
 6 HOLES ARE ON BORDERS .750 FROM DIMEN -C-.

MATERIAL: AL ALLOY 8061-T6 PER QQ-A-250/11	
LVPS BOX FRAME, MEP	
DRAWN BY: DOMAKOWSKI	REV. FROM NO. 8015-A4
DATE: 18-AUG-87	SCALE: 1/2" = 1" SHEET 1 OF 2

04-AUG-87 8015-A4



REV. FROM NO.	REV. NO.	8015-A4
SCALE: 1/2"		SHEET 2 OF 2